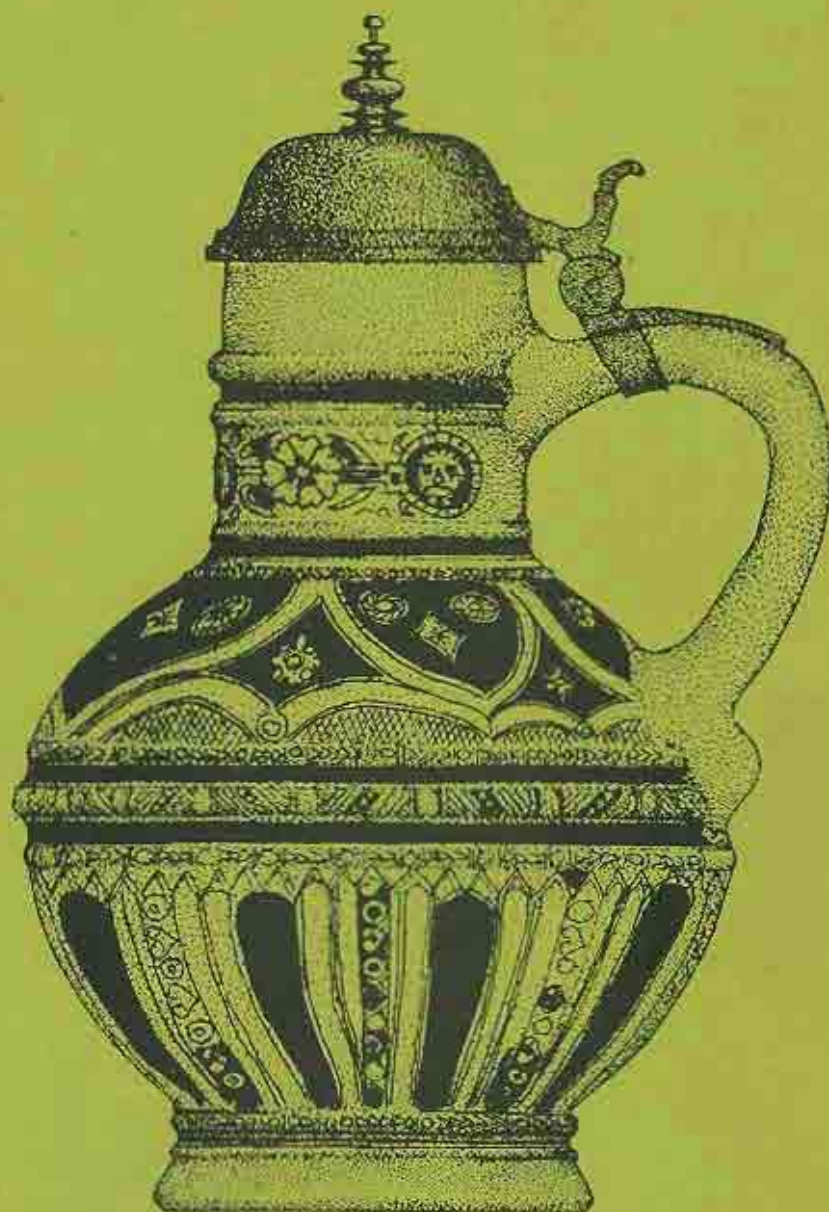


BATAVIA CATALOGUE



Compiled by Myra Stanbury

Department of Maritime Archaeology,
Western Australian Museum, Francis St., Perth, W.A. 6000.

NOTE:

This is a preliminary catalogue of material recovered from the Dutch East Indiaman, 'Batavia', wrecked in 1629 on Morning Reef in the Wallabi Group of the Houtman Abrolhos. The material recorded includes that from the wrecksite itself and from associated land sites in the Wallabi Group of islands.

Material with registration numbers up to Bat 900 was recovered prior to 1972. Material with registration numbers Bat 1000 onwards has been recovered during two seasons' excavations - 1972/73 and 1973/74 - by the Maritime Archaeology Department of the Western Australian Museum, under its Curator, Mr Jeremy N. Green.

The material is currently being treated in the Museum's Conservation Laboratory under the direction of Dr Colin Pearson.

CONTENTS

1. STONE

- Page 1. 10. Building blocks
 11. Slate
 12. Coal
- Page 2. 14. Sharpening and Grinding
 Stones
 15. Flint
 16. Chalk
 17. Unspecified

2. CERAMICS

- Page 3. 21. Stoneware
- Page 9. 22. Earthenware
- Page 12. 23. Majolica
- Page 13. 24. Delft
 25. Bricks
 27. Clay pipes
 29. Porcelain

3. NON FERROUS MATERIAL

- Page 14. 30. Unknown
- Page 15. 31. Bronze
- Page 17. 32. Copper-Brass
- Page 32. 33. Pewter
- Page 37. 34. Lead
- Page 44. 35. Silver
- Page 45. 36. Gold

4. MISCELLANEOUS

- Page 46. 40. Human
- Page 47. 41. Animal
- Page 48. 42. Fruits, seeds, etc
 43.
- Page 2. 14. Sharpening and Grinding
 Stones
 15. Flint
 16. Chalk
 17. Unspecified

2. CERAMICS

- Page 3. 21. Stoneware
- Page 9. 22. Earthenware
- Page 12. 23. Majolica
- Page 13. 24. Delft
 25. Bricks
 27. Clay pipes

Page 70.	63. Cargo
Page 71.	64. Fittings
Page 73.	65. Tools
Page 75.	66. Bark
Page 76.	67. Miscellaneous

8. FERROUS

Page 77.	81. Armament
Page 83.	82. Ships fittings
Page 85.	83. Tools etc.
Page 86.	84. Cargo
Page 87.	86. Concretions

8. FERROUS

Page 77.	81. Armament
Page 83.	82. Ships fittings
Page 85.	83. Tools etc.
Page 86.	84. Cargo
Page 87.	86. Concretions

<u>Reg. No.</u>	<u>STONE 10 (BUILDING BLOCKS)</u>	<u>Photographs Black & White</u>
Bat 1000 to Bat 1132	Sandstone blocks of varying designs, some with engraved letters and numbers. From a portico facade. (See drawing)	

STONE 11 (SLATE)

Slate pencils - 4
Nos. 4202, 4203, 4204, 4205

Pieces of slate

Nos. 4126, 4127, 4135, 4146
4163, 4174, 4176, 4179
4188, 4208, 4212, 4216,
3163, 499, 551, 615,
649, 710.

STONE 12 (COAL)

Pieces of coal

Nos. 4010, 4014, 4018, 4057,
4119, 4154, 4170, 4188,
4195, 4417, 479, 502,
526, 547, 570, 587,
617, 663, 679.

STONE 11 (SLATE)

Slate pencils - 4
Nos. 4202, 4203, 4204, 4205

Pieces of slate

Nos. 4126, 4127, 4135, 4146
4163, 4174, 4176, 4179
4188, 4208, 4212, 4216,
3163, 499, 551, 615,
649, 710.

<u>Reg. No.</u>	<u>STONE 14 (SHARPENING STONES)</u>	<u>Photographs</u> <u>Black & White</u>
	Sharpening Stones - 28	
	Nos. 4029, 4030, 4031, 4035, 4036, 4037, 4054, 4061, 4094, 4128, 4131, 4150, 4151, 4175, 4185, 4191, 498, 556, 588, 612, 667.	
	 <u>STONE 15 (FLINTSTONES)</u>	
	Flintstones - 4	
	Nos. 4045, 4012, 4073	
	 <u>STONE 16 (CHALK)</u>	
Bat 676	Piece of chalk	
	 <u>STONE 17 (MISCELLANEOUS)</u>	
Bat 4086	Semi-circular shaped object; light grey, fine grained rock (Argillite) Engraved markings	155/15-71
Bat 4193]		
Bat 4001]		
Bat 4015]	Unidentified fragments of stone(7)	
Bat 4182]		

CERAMICS 21 (STONEWARE)

<u>Reg. No.</u>	<u>Stoneware Jugs & Vessels</u>	<u>Photographs Black & White</u>
Bat 2147	Stoneware jug: Mask & 3 medallions (Handle missing)	128/21-30 161/10 -13
Bat 2150	Stoneware jug: Mask & 1 medallion - Gelderland Coat of Arms (No neck or handle)	124/16 -19 128/13 -20 161/6 - 9
Bat 2240	Stoneware jug: Mask & 3 medallions Twisted handle	132/9 -14, 136/22-28 135/27-14, 060/32-35
Bat 2259	Stoneware jug: Mask & 1 medallion (Reconstructed from fragments - some pieces missing)	159/2-4 158/36-37 139/32 -33
Bat 2283	Stoneware jug: Mask & 1 medallion - Gelderland Coat of Arms	149/4 -6 160/27-31
Bat 2303	Stoneware jug: Blue/Grey design with pewter lid (Restored from fragments)	151/26-31
Bat 2325	Stoneware jug: Mask & 3 medallions	152/6, 151/32-37 160/23-25
Bat 2358	Stoneware jug: Blue/Grey design with pewter lid & handle	158/18 -25
Bat 2372	Stoneware jug: Mask & 3 medallions (Handle missing)	159/5-8 161/2-5
Bat 2381	Stoneware jug: 2 medallions Neck & 3rd medallion missing	
Bat 2397	Stoneware jug: Mask & 3 medallions Amsterdam Coat of Arms	326/9-12
Bat 2579	Stoneware jug: No mask or medallions Pieces missing	

<u>Reg. No.</u>	<u>Stoneware Jugs & Vessels</u>	<u>Photographs Black & White</u>
Bat 2667	Stoneware jug: No mask or medallions	
Bat 326	Stoneware jug: White with blue design Mask with lions either side & 2 medallions (See illustration)	W34
Bat 327	Stoneware jug:	
Bat 328	Stoneware jug: Buff colour with blue design (Neck & handle missing)	W30/33
Bat 329	Stoneware jug: Buff colour with blue design. Top part of body only	W30/36
Bat 445	Stoneware jug: No mask or medallions	
Bat 505	Stoneware jug: No mask or medallions (Piece missing)	
Bat 446	Stoneware jug: 21 pieces (neck, mask, medallion & handle missing) 2 medallions - Amsterdam Coat of Arms	
Bat 2406	Stoneware pot with 2 handles	

CERAMICS 21 (STONEWARE)

<u>Reg. No.</u>	<u>Stoneware jug medallion sherds</u>	<u>Photographs Black & White</u>
Bat 2029	4 Sherds - dark brown glaze, with double-headed eagle. (Nos: 2030, 2224, 2456)	141/2, 3, 30, 31.
Bat 2033	5 Sherds - blue & white. Lady with anchor depicting the personification of "Hope". (Nos: 539, 2219, 2609)	141/6
Bat 2136	Medallion sherd, light brown glaze. Musicians and dancers in pillared archways.	141/5
Bat 2032	Medallion fragments - light brown mottle with cobalt splashes. Curling leaves & stems. (Nos: 602, 2534)	142/7
Bat 2186	6 Sherds - light brown mottle with dark blue cobalt splashes. Head of Caesar. (Nos: 483, 2619, 2532, 539)	
Bat 539C	Medallion sherd - buff colour, profile of head with rose and figures '19' alongside.	
Bat 602A	Medallion sherd - buff colour with flowers in diamond shape.	
Bat 428	Medallion sherd - light brown mottle, Coat-of-Arms with letters 'I Y MAL Y P'	
	40 Sherds - Coat-of-Arms of Amsterdam.	140/35 142/3, 10, 8
	3 Sherds - Coat-of-Arms of Cologne.	
	3 Sherds - Coat-of-Arms of Gelderland.	
	9 Sherds - Coat-of-Arms of Julich-Kleve-Berg-Mark-Ravensberg.	140/25
	86 Unidentified heraldic medallion sherds.	

<u>Reg. No.</u>	<u>Stoneware jug, medallion sherds</u>	<u>Photographs Black & White</u>
22	Stylistic heraldic medallion sherds	141/4
47	Rosette medallion sherds	140/18-21 141/8, 9, 32
Bat 2036	Medallion sherd with face	142/9
11	Sherds - blue and white floral medallions	140/31, 32 141/2, 5, 18
3	Sherds with writing [Nos 2190, 2495,	
Bat 2558	1 Sherd with part of horse and the name 'IAN ALLER'	
10	Sherds - blue and white with standing lions	
Bat 2188) 478)	2 Blue and white heraldic medallions	

<u>Reg. No.</u>	<u>Necks and mask sherds</u>	<u>Photographs Black & White</u>
	Type A - Ladder mouth - 5 [Nos 2035, 2037, 2102, 2182, 2214]	139/30, 31 141/35, 36
	Type A (var) - Grinning ladder mouth - 3 [Nos 2113, 2530, 538E]	140/36
	Type B - Forked beard - 7 [Nos 2059, 2064, 2065, 2165, 2450, 603B, 698]	139/36 140/13 141/24
	Type C - Fish mouth - 2 [Nos 2270, 538A]	
	Type D - Open hour glass - 2 [Nos 2106, 2110]	
	Type E - Hour glass - 5 [Nos 2140, 2181, 2213, 2291, 538D]	140/14 142/14, 15, 16
	Type F - Lion mouth - 13 [Nos 2103, 2112, 2141, 2166, 2167, 2194, 2271, 2373, 2425, 2481, 538B & C, 603A, 354]	140/21 141/37, 26, 25 142/11
	Type F (var) - 2 [Nos 2104, 2213]	141/27
	Type G - Plaited moustache - 1 [No. 2055]	
	Miscellaneous mask fragments - 43	
Bat 450	Part of neck and handle of stoneware jug with pewter lid	
Bat 2234	Neck and mask of stoneware jug.	

<u>Reg. No.</u>	<u>Necks and mask sherds</u>	<u>Photographs Black & White</u>
Bat 2165	Mask and shoulders of stoneware jug. Light brown medium mottle with coin-like medallions and acanthus leaves.	
	19 Loose sherds possibly from same or similar jug.	
Bat 2056	Neck and handle of blue-grey stoneware jug.	141/33-34
Bat 2002	Neck of stoneware jug - light brown glaze & floral patterning.	141/23
Bat 2114	Part of neck & shoulders of stoneware jug.	140/16
Bat 2137a	Neck of jug with pouring lip.	140/5
Bat 2304	Neck and handle of stoneware jug & several sherds of same jug similar to Bat 326.	

STONEWARE SHERDS

Brown mottle:

Approx. 1,500

Blue & White (Siegburg type)

Approx. 100

Blue/grey (Westerwald type)

Approx. 100

Buff - with raised & incised design

Approx. 30

CERAMICS 22 (EARTHENWARE)

<u>Reg. No.</u>	<u>Apothecary Jars</u>	<u>Photograpas Black & White</u>
Bat 2252	Earthenware apothecary jar - inner glazing	
Bat 2260	Earthenware apothecary jar - inner glazing	
Bat 2296	Earthenware apothecary jar - light brown inner glaze	
Bat 2297	Earthenware apothecary jar - light brown inner glaze	
Bat 2298	Earthenware apothecary jar - light brown inner glaze	
Bat 2299	Earthenware apothecary jar - light brown inner glaze	
Bat 2301	Earthenware apothecary jar	
Bat 2319	Earthenware apothecary jar - brown inner and outer glaze	
Bat 2320	Earthenware apothecary jar - brown inner glaze	
Bat 2321	Earthenware apothecary jar - dark brown inner glaze	
Bat 2322	Earthenware apothecary jar - dark brown inner glaze	
<hr/>		
Bat 2252	Earthenware apothecary jar - inner glazing	
Bat 2260	Earthenware apothecary jar - inner glazing	
Bat 2296	Earthenware apothecary jar - light brown inner glaze	
Bat 2297	Earthenware apothecary jar - light brown inner glaze	
Bat 2298	Earthenware apothecary jar -	

<u>Reg. No.</u>	<u>Apothecary Jars</u>	<u>Photographs Black & White</u>
Bat 2330	Earthenware apothecary jar (incomplete)	
Bat 2332	Earthenware apothecary jar	
Bat 2367	Earthenware apothecary jar - yellow inner glaze	
Bat 2415	Earthenware apothecary jar	
Bat 2422	Earthenware apothecary jar	
Bat 2424	Earthenware apothecary jar	
Bat 2436	Earthenware apothecary jar	
Bat 2544	Earthenware apothecary jar (incomplete)	
	Pieces of apothecary jar	
	Nos. 2300, 2360, 2567, 475, 476.	
<u>Earthenware Vessels</u>		
Bat 2315	Earthenware pot (incomplete)	
Bat 2353	Earthenware, tripod skillet with inner glazing	154/27-30, 158/6-9
Bat 2334	Earthenware cup with horizontal handle	157/33-37, 154/20-26 158/3-4
Bat 2335	Earthenware urn (incomplete)	
Bat 2336	Part of earthenware urn	

<u>Reg. No.</u>	<u>Earthenware Vessels</u>	<u>Photographs Black & White</u>
Bat 2339	Earthenware pot (incomplete)	
Bat 2491	Earthenware pipkin (incomplete)	
Bat 2267	Glazed earthenware lid	
Bat 436	Earthenware cup with handle	W30/35
Bat 475	Part of glazed earthenware pot	
	Earthenware sherds - Approx. 500	
	Nos. 2027, 2043, 2053, 2101, 2120, 2143, 2145, 2155, 2157-2158, 2176, 2180, 2205, 2212, 2238, 2244, 2249, 2255, 2269, 2277, 2280, 2282, 2285, 2288, 2290, 2293 - 2295, 2302, 2344 - 2347, 2356, 2357, 2359, 2362 - 2364, 2368 - 2369, 2371, 2378, 2379, 2384, 2385, 2390 - 2392, 2399, 2402, 2405, 2407, 2409, 2416, 2423, 2429, 2428, 2429, 2434, 2437, 2439, 2442, 2443, 2447, 2471, 2480, 2497, 2528, 2541, 2542, 2544, 2549, 2551, 2562, 2566, 2583, 2586, 2595, 2601, 2604, 2606, 2614, 2622, 2623, 2624, 2630, 2635, 2640, 2643, 2651 - 2654, 2657, 2664, 2674, 2679.	

CERAMICS 23 (MAJOLICA)

<u>Reg. No.</u>		<u>Photographs Black & White</u>
Bat 2305	Majolica drug jar - broken	
Bat 2318	Majolica drug jar (restored from fragments)	154/12-15, 157/29-32, 240/34-37, 242/17-24
Bat 2326	Majolica drug jar (restored from fragments)	154/3-6, 157/18-23, 240/34-37, 242/17-24
Bat 2331	Majolica drug jar (restored from fragments)	154/7-11, 157/24-28
Bat 2337	Majolica drug jar (restored from fragments)	154/16-20, 158/14-17
Bat 2370	Majolica drug jar (worn)	
Bat 2668	Majolica drug jar	W100
Bat 2669	Majolica drug jar	W100
Bat 2670	Majolica drug jar	W100
Bat 2266	Majolica drug jar (restored from fragments)	

Majolica

Majolica sherds
 Nos. 2101, 2164, 2227-2232,
 2265, 2307, 2348, 2366,
 2376, 2380, 2387, 2389,
 2401, 2403, 2408, 2411,
 2430, 2447, 2526, 2547,
 2557, 2565, 2584, 2597,
 2605, 2621, 2628, 2629,
 2642, 2645, 2648, 2649,
 2671, 2675, 357, 477,
 478, 501, 542, 605,
 610, 622.

CERAMICS 24 (DELFT WARE)Reg. No.Photographs
Black & White

Bat 2286 Plate fragment

CERAMICS 25 (BRICKS)Ballast bricks - Approx. 8,233.
Nos. 282, 383, 398, 554.CERAMICS 27 (CLAY PIPES)

Bat 2550 Pipe fragment

Bat 2672 Pipe fragment

CERAMICS 29 (PORCELAIN)Bat 2555 Blue & white floral porcelain
vessel - incomplete.[Nos. 508, 2089, 2169, 2470,
2481, 2514, 2569]CERAMICS 25 (BRICKS)Ballast bricks - Approx. 8,233.
Nos. 282, 383, 398, 554.CERAMICS 27 (CLAY PIPES)

Bat 2550 Pipe fragment

Bat 2672 Pipe fragment

NON-FERROUS 30 (UNKNOWN METAL)

<u>Reg. No.</u>		<u>Photographs</u> <u>Black & White</u>
Bat 4065	3 Fragments of indeterminate material	
Bat 4115	5 Pieces of unknown material	
Bat 4226	2 Pieces of thin metal sheet - unidentified	
Bat 3017	Metal remains	
Bat 3117	Round metal object	
Bat 3138	2 Metal fragments	
Bat 3192	Metal fragment	
Bat 3264	Round metal object in concretion [See Brass misc)	170/29-30
Bat 3382	Concretion with tinfoil type metal	
Bat 3486	20 Unidentified metal fragments	
Bat 3506	Unidentified metal objects	
Bat 336	Metal fragments & iron object	
Bat 3647	Unidentified metal object	
Bat 3648	Unidentified tube-shaped metal object	

NON-FERROUS 31 (BRONZE)

<u>Reg. No.</u>	<u>Cannon etc</u>	<u>Photographs Black & White</u>
Bat 3627	Bronze cannon, Rotterdam Admiralty - 1616. Bore: 151mm Length: 313.75cm.	095 A.B.C.D.
Bat 3637	Demi-Culverin, Rotterdam Admiralty - 1603. Bore: 120mm Length: 352.5cm.	
Bat 3638	Bronze cannon, Amsterdam Admiralty - 1616. Bore: 153mm Length: 331cm.	035a 035b 036a 036b 037.
Bat 3639	Bronze cannon, Amsterdam Admiralty - 1616. Bore: Length:	034
Bat 3640	Bronze cannon, Rotterdam Admiralty - 1616. Bore: 153mm Length: 319cm.	038a & b 139.
Bat 3552	Bronze dolphin from cannon	
Bat 458	Bronze cascade from cannon	
Bat 346	Bronze dolphin from cannon Inscription: "Rotterdam 1616" on Cannon.	
Bat 407	Blunder bus	244/36, 37 245/1-6
Bat 408	Blunder bus	
Bat 3261	Copper section of blunder bus	244/37
Bat 457	Bronze mortar. Inscription: Length: 313.75cm.	
Bat 3637	Demi-Culverin, Rotterdam Admiralty - 1603. Bore: 120mm Length: 352.5cm.	
Bat 3638	Bronze cannon, Amsterdam Admiralty - 1616. Bore: 153mm Length: 331cm.	035a 035b 036a 036b 037.
Bat 3639	Bronze cannon, Amsterdam Admiralty - 1616. Bore: Length:	034

<u>Reg. No.</u>		<u>Photographs</u> <u>Black & White</u>
Bat 3404	Bronze bell. No inscription Ht. 31cms. Wt. 14kg.	201/2-13 244/27-30
Bat 3201	Bronze bell - incomplete Ht. 15cms.	161/27-29
Bat 3468	Fragments of bronze bell	
Bat 3514		
Bat 3579	Claw foot and ball	
Bat 3449	Bronze semi-circular weight	
Bat 3400	Bronze astrolabe - circular	232/36
Bat 394	Bronze astrolabe	
Bat 394R	Replica of above	
Bat 455	Bronze semi-circular astrolabe	309/718
Bat 455R	Replica of above.	

NON-FERROUS 32 (COPPER-BRASS)

<u>Reg. No.</u>	<u>Brass Bells</u>	<u>Photographs Black & White</u>
Bat 3297	Small brass bell	167/25
Bat 3448	Small brass bell	
Bat 3258	Small brass bell	174/9-10

Brass Bowls etc.

Bat 3215	Brass bowl - edges partly eroded	243/16-19
Bat 3604	Brass bowl with 3 holes around rim. Diam: 30.4cm	273/36-37
Bat 3136	Brass tripod pot	161/14-18
Bat 3254	Brass tripod urn with two handles	
Bat 516	2 Brass barber's bowls	

Brass Buckles

Bat 3002	Square buckle 25 x 25 mm broken	170/7-8
Bat 3043	Brass belt riders	167/31-34
Bat 3198	Square buckle 26 x 25mm-misshapen	170/3
Bat 3258	Small brass bell	174/9-10

Brass Bowls etc.

Bat 3215	Brass bowl - edges partly eroded	243/16-19
Bat 3604	Brass bowl with 3 holes around rim. Diam: 30.4cm	273/36-37
Bat 3136	Brass tripod pot	161/14-18

<u>Reg. No.</u>	<u>Brass Buckles</u>	<u>Photographs Black & White</u>
Bat 3476C	Part of buckle	
Bat 3498 2	Fragments of buckle	
Bat 3504 2	Ornate belt riders	
Bat 3511	Ornate buckle	
Bat 3511A	Ornate belt riders	
Bat 3566	Square buckle - broken	
Bat 3619	Fragment of square buckle	
Bat 3624	Square buckle 23 x 25mm	
Bat 340	Buckle	
Bat 361	Buckle	
Bat 359	Ornate buckle	
Bat 495	Small buckle	
Bat 561 4	Brass buckles	
Bat 694	Brass buckle	

Brass Buttons

Bat 3467	Brass button
Bat 3476A	Small brass button
Bat 3589 6	Small brass buttons
Bat 3596	Brass button - patterned
Bat 3620 2	Brass buttons - lead filled
Bat 3629 11	Brass buttons
Bat 3633 2	Brass buttons - lead filled
Bat 3625	Brass armour rivet & 1 black button
Bat 496A	Brass button
Bat 592	Brass button

<u>Reg. No.</u>	<u>Brass Candlesticks</u>	<u>Photographs Black & White</u>
Bat 3068	Lower part of candlestick	161/19-23
Bat 3397	Candlestick with wax remains	

Brass Cannon Touch-Hole Prickers

Bat 3075] Bat 3084] Bat 3085]	3 Touch hole prickers	175/19-20
Bat 3206	Touch hole pricker	175/18
Bat 3221	Touch hole pricker	170/23
Bat 3244	2 Touch hole prickers	167/12-14
Bat 3337	Touch hole pricker with twisted end	175/18
Bat 3616	Touch hole pricker with twisted end	

Brass Ferrules

Bat 3039	Brass ferrule - top half	174/19-20
Bat 3052	Brass ferrule with wood	174/15,16
Bat 3133	Brass ferrule	174/17-18
Bat 3218	Brass ferrule	170/25,26
Bat 3247	Brass ferrule	170/24
Bat 3322	Brass ferrule	175/28,29
Bat 3343	Brass ferrule	
Bat 3424	Brass ferrule	
Bat 3458	Brass ferrule	
Bat 3469	Brass ferrule	
Bat 3481	Brass ferrule with wood	

<u>Reg. No.</u>	<u>Brass Ferrules</u>	<u>Photographs Black & White</u>
Bat 3555 to Bat 3560	6 Brass ferrules	
Bat 3584	Brass ferrule	
Bat 3600	2 Fragments of ferrules	
Bat 3612	Brass ferrule	
Bat 3615	Fragment of ferrule	
Bat 673	2 Brass ferrules	

Brass Fittings

Bat 3000	Ornate, curved object with hole at one end - possibly handle	170/4-6
Bat 3104	Brass object with screw thread and iron core	170/33-34
Bat 3112	Brass hinge	170/35-37
Bat 3185	Brass fitting	174/13-14
Bat 3362	Brass object with screw thread	
Bat 3370	Head of tack	
Bat 3379	Brass stopper with 2 strips of metal running through	
Bat 3402	Butterfly nut	
Bat 3436A	Unidentified brass fitting	
Bat 3480	Brass hinge	
Bat 3580	Unidentified mushroom shaped object	
Bat 3595	Brass wing nut	
Bat 3598	Brass fitting - unidentified	
Bat 3617	Brass stirrupshaped object with washers	
Bat 3635	Brass fitting - unidentified	

<u>Reg. No.</u>	<u>Brass Fittings</u>	<u>Photographs Black & White</u>
Bat 350	Brass heart-shaped hasp with 2 holes	
Bat 3240	Brass heart-shaped hasp with hole at top	175/16,17
Bat 565C 3	Brass hooks (Clothes)	
Bat 3380	Flat, ornamental object - unidentified	
Bat 3631	Flat ornamental object (As 3380 only larger)	279B/17
Bat 571	Brass bracket with 2 copper rivets	
Bat 628	Brass stopper	
Bat 659	Thread from screw	
Bat 358	Dome-shaped brass cap.	

Brass Lamps

Bat 3079	Three wick, gimbal oil lamp (Wick - see Bat 4027)	159/25-27
Bat 3628	Three wick, gimbal oil lamp	W 30/3
Bat 3634	Three wick gimbal oil lamp	
Bat 372	Three wick, gimbal oil lamp	W 30/37

Miscellaneous Objects

Bat 3429	Oval medallion with Coat of Arms of Prince Maurice Nassau House of Orange	218/18-19 240/1-4
Bat 3238	Brass Thimble	167/29-30
Bat 3183	Brass Thimble	167/35-36

<u>Reg. No.</u>	<u>Miscellaneous Objects</u>	<u>Black & White</u>
Bat 3274	Brass seal. Inscription: 'G.O.B.' & cross	167/2-5 161/37
Bat 342	Brass seal. Inscription: "TANGER-MVNDE"	
Bat 3475	Knife handle with patterning	
bat 3590	Brass pen	
Bat 3613	Scabbard tip	
Bat 5650	Brass flower holder-conical	
Bat 3074	Rolled piece of brass - possibly end of shoelace	170/32
Bat 3189	As Bat 3074	170/31
Bat 3389	As Bat 3074	
Bat 3087	Brass charcoal tongs	
Bat 424	Brass charcoal tongs	
Bat 419	Brass bugle stem (2 parts)	
Bat 619	Brass rim in concretion	
Bat 3347	Unidentified brass object	
Bat 3264	Round brass object with decoration - unidentified	170/29-30
<u>Brass Navigation Instruments</u>		
Bat 3053	Brass dividers	150/12-16 175/3-6
Bat 3071	Part of meridian ring from celestial globe. Scale marked 70, 80	
Bat 3083	Section of a Barent's arm originally part of an Astrolabium Catholicum	144/20-32 175/13-15
Bat 3171	Brass dividers	175/7-12

<u>Reg. No.</u>	<u>Brass Navigation Instruments</u>	<u>Photographs Black & White</u>
Bat 3253	Brass dividers	159/31-34
Bat 3307	Graduated Brass Strip	170/11
Bat 3320	Brass dividers with Coat of Arms of Amsterdam	
Bat 3358	Graduated, curved brass strip with small pointed leg	
Bat 3388]	Brass dividers	
Bat 3406]		
Bat 3407]		
Bat 3576]		
Bat 3506	Part of arm of dividers	
Bat 3601	Top part of dividers	
Bat 3512	Arm of dividers	
Bat 422	Brass semicircular protractor	
Bat 422R	Replica of above	
Bat 421	Brass dividers	
Bat 421R	Replica of above	
Bat 3646	Brass meridian ring from globe	
Bat 3646R	Replica of above	

Patch - Boxes

Bat 3103 (+3181)	Brass patch box. Front face patterned; hand pointing to clasp	150/17 174/28-29
Bat 3131	Brass patch box with fabric Front face patterned; hand pointing to hook clasp	144/13,14 143/17A-32 218/22-25 232/33
Bat 3113	Brass patch box (c.f. 3103 & 3131)	150/18-20 174/30-31

<u>Reg. No.</u>	<u>Brass Pins</u>	<u>Photographs Black & White</u>
Bat 3014	Concretion with brass pin, wood & amber	
Bat 3585	Brass hair pin <u>81 Brass pins</u> Nos. 3063, 3359, 3360, 3361, 3377, 3410, 3419, 3476B, 3614, 3622, 3632, 565B.	
<u>Brass Rings</u>		
Bat 3132	Brass ring with hunting motif	170/12-16 218/26-32 232/32
Bat 3224	2 Brass rings	170/9-10
Bat 3259	Unidentified brass ring - open at top with claw foot ends. Diam. 51mm	170/11-12
Bat 3275	Brass ring as 3259	167/26-27
Bat 3399	Brass ring as 3259 Diam. 69mm	
Bat 3457	Brass ring	
Bat 3583	Brass ring - as 3259 Diam 62.5mm	
Bat 3599	Brass ring - as 3259 Diam 62.5mm	
Bat 3608	Small brass ring Diam 14mm	
Bat 3609	Brass ring Diam 25.5mm	
Bat 3618	Flat brass ring Diam 34mm	

<u>Reg. No.</u>	<u>Brass Strips & Fragments</u>	<u>Photographs Black & White</u>
Bat 3090]		
Bat 3162]	2 Brass Strips 3cm wide	
Bat 3184	2 Brass strips 3.5cm wide	
Bat 3304	Brass strip 5 cm wide	
	Also Nos. 3450, 3621, 3234A 3361A, 3232A, 3369, 3403, 3485A, 3567, 3578, 3582, 3588, 3310, 3523, 3636, 3625, 4118, 3054, 3174, 3205, 367C, 552.	

Brass Taps

Bat 3260	Brass tap	161/24-26 232/30
Bat 493	Tap spiggot Fragments of taps and tap spiggot	
	Nos. 3363, 3434, 3572, 3509A, 3455, 3482, 724.	

Brass Trumpet Mouthpieces

Bat 3222	Trumpet mouthpiece	170/17-19
Bat 3252	Trumpet mouthpiece	170/27/28
Bat 3602	Trumpet mouthpiece	
Bat 3575	Trumpet mouthpiece	

Brass Weights

Bat 3219	Nest of brass weights - each engraved with fleur de lis	161/30-36 200/27-28 326/3-7
----------	---	-----------------------------------

<u>Reg. No.</u>	<u>Brass Weights</u>	<u>Photographs Black & White</u>
Bat 3295	Square brass weight: Inscription '1/2' on one side	174/22-23
Bat 3296	Square brass weight: Inscript- tion '4' on one side pattern on reverse	174/24-25
Bat 628	Round brass weight	

Brass Wire

Bat 3077	Wire coil	
Bat 3078	Brass wire	
Bat 3161	Strands of thin brass wire Diam. 1mm	
Bat 3186	Brass wire	167/8
Bat 3187	Brass wire - one surface flattened Diam. 2mm	167/9-11
Bat 3188	Whipped brass wire, Diam. 8mm	167/6-7
Bat 3193	Thin coiled brass wire	
Bat 3250	Brass wire fragments Diam 1.5mm	
Bat 3378	Twisted brass wire	
Bat 3411]		
Bat 3417]	Brass wire	
Bat 3420]		
Bat 3422]		
Bat 3423 3	Strands of twisted brass wire	
Bat 3581	Twisted brass wire. Diam. 2.8mm	
Bat 3586	Brass wire. Diam. 1.7mm	
Bat 3587	Coiled brass wire - clasp like	
Bat 3591	Brass wire trace - Diam 1.4mm	

<u>Reg. No.</u>	<u>Brass Wire</u>	<u>Photographs Black & White</u>
Bat 3593	Brass wire - twisted at both ends Diam. 1.4 mm	
Bat 3593A	Small, brass wire clasp	
Bat 3607	Coil of brass wire, Diam. 1.4mm	275A/31-32
Bat 4450	Sword pommel; wood with brass wire whipping	279B/15
Bat 4125	Sword pommel - wood with brass wire whipping	
Bat 496B	Part of sword pommel - wood with brass wire whipping	
Bat 574	Sword pommel - wood with brass wire whipping	

NON-FERROUS 32 (COPPER-BRASS)

<u>Reg. No.</u>	<u>Cannon</u>	<u>Photographs Black & White</u>
Bat 3641	Copper cannon 'AVOC' mark Length: 219 cms. Bore: 150mm	
Bat 3642	Copper cannon (No7)-composite 'AVOC' mark. Wt. 1715A. Length: 220 cms Bore: 150mm.	144/15-28 143/8A-16A
Bat 347	Cascable from cannon No 7 (Bat 3642)	
<u>Miscellaneous Copper Objects</u>		
Bat 3280	Copper bowl	158/29-35
Bat 666	Copper rectangular dish	
Bat 3336	Cannon ball gauge '+ 11'	
Bat 3134	Copper hinge plate	
Bat 3561	Part of copper handle	
Bat 3569	Copper leg from pot	
Bat 3574	Small copper leg from pot	
Bat 644	2 Copper legs - worn	
Bat 654	Copper leg	
Bat 37'	Circular copper object	
Bat 368	Hemispherical copper object	
Bat 3236	Copper spoon head	
	5 Copper Nails - (Nos. Bat 3270, 3465, 3484, 3512, 3570)	
Bat 3426	Circular piece of copper.	
Bat 715	Round copper object - bowl- shaped with holes around edge	

<u>Reg. No.</u>	<u>Powder Canisters</u>	<u>Photographs Black & White</u>
Bat 3630	Copper powder canister - partly eroded. Diam.	
Bat 403	Copper powder canister - ends missing	
Bat 404	Copper powder canister	
Bat 405	Copper powder canister	
Bat 406	Copper powder canister	
Bat 416	Copper powder canister - brass base	
Bat 420	Copper powder canister - ends missing	
Bat 510	Copper powder canister	
Bat 680	Copper powder canister	
Bat 3110	Lid of powder canister	
Bat 3324	Lid of powder canister - copper & brass	
Bat 572	Copper powder canister lid and band	
Bat 369	Copper powder canister lid	
Bat 390	Copper powder canister lid	
Bat 3276	Fitment from copper powder canister lid	
Bat 373	Copper handle from powder canister	
	Miscellaneous pieces of powder canisters. (Nos Bat 371, 401, 391, 686, 687, 370, 417, 3089, 3142, 3241, 349A)	

<u>Reg. No.</u>	<u>Powder Measures</u>	<u>Photographs Black & White</u>
Bat 3005	Copper powder measure Ht. 136mm	128/31-35
Bat 3306	Copper powder measure Ht. 250mm	
Bat 517	Copper powder measure with handle	
Bat 688	Powder measure - brass with copper base & handle	
Bat 589	Copper powder measure with V11 on body & handle	
Bat 407	Copper powder measure	
Bat 578	Copper powder measure	

Powder Scoops

Bat 4359	Copper powder scoop with part of wooden handle	274/27, 35, 36
Bat 3441	Copper powder scoop	
Bat 3415	Copper powder scoop	
Bat 3283	Encrusted copper powder scoop	
Bat 4409	Encrusted copper powder scoop	
Bat 397	Copper powder scoop	
Bat 723	Encrusted powder scoop	
Bat 4360	Fragments of powder scoop	
Bat 4386	Disintegrated powder scoop	

Copper Fragments

See Nos. Bat 3013, 3015, 3057,
3066, 3072, 3116, 3149, 3151,

Reg. No.Copper FragmentsPhotographs
Black & White

3203,	3232,	3234,	3262,	3323,
3348,	3356,	3413,	3428,	3433,
3438,	3440,	3509A,	3571,	3577,
3597,	3615,	3611,	3610,	3485,
627,	626,	643,	463A,	530,
653,	489,	582,	418,	690,
414,	496,	660,		

NON-FERROUS 33 (PEWTER)

<u>Reg No.</u>	<u>Bottle Tops</u>	<u>Photographs Black & White</u>
Bat 3067	Bottle top with glass	204/13-14
Bat 3046	Bottle top	
Bat 3154	Cap of bottle top	
Bat 3172	Bottle top	204/5-7
Bat 3255	Bottle top	
Bat 3285	Bottle top	204/20-22
Bat 3286	Bottle top	204/15-16
Bat 3298	Bottle top with glass	
Bat 3299	Bottle top with glass	
Bat 3314	Bottle top	175/21/23
Bat 3317	Bottle top	204/23-25
Bat 3319	Bottle top with glass	
Bat 3342	Bottle top with ring	204/8-10
Bat 3344	Bottle top collar	
Bat 3374	Bottle top	
Bat 3414	Small bottle top	
Bat 3421	Bottle top	204/1-4
Bat 3445	Bottle top with ring & glass	
Bat 3446	3 Bottle tops	
Bat 3466	Bottle top with ring & 1 collar	
Bat 3479	4 Bottle tops	
Bat 3503	3 Bottle tops	
Bat 3510	Bottle top	
Bat 7002	Bottle top	
Bat 7004	Bottle top rim	

<u>Reg. No.</u>	<u>Bottle tops</u>	<u>Photographs Black & White</u>
Bat 7005	Small bottle top rim	
Bat 7045	Bottle top	
Bat 7046	Bottle top	
Bat 7051	Bottle top collar	
Bat 7060	5 Bottle tops	
Bat 7073	Bottle top with glass	
Bat 7101	Bottle top cap	
Bat 490	Bottle cap rim	
Bat 664	Bottle cap	
Bat 624	2 Bottle tops	
Bat 669	Bottle cap	
Bat 709A	Bottle top	
Bat 711	Bottle top	
Bat 719	Bottle top with glass	

Pewter Plates & Utensils etc

Bat 3279	Pewter plate. Tudor rose & crown maker's mark. Diam: 355mm	175/30-33
Bat 3208	Pewter plate - worn Diam: 200mm	
Bat 441	Pewter plate	
Bat 442	Pewter plate	
Bat 560	Pewter plate - Tudor rose maker's mark & angel on reverse side.	308/2-5
	Plate fragments Nos. 3339, 3412, 3451, 3487, 7006, 7020.	
Bat 3004	Pewter coffee pot	128/3-12
Bat 439	Pewter coffee pot	

<u>Reg. No.</u>	<u>Plates & Utensils etc</u>	<u>Photographs Black & White</u>
Bat 3427	Pewter coffee pot lid	
Bat 7061	Pewter lid & fragments	
Bat 333	Pewter lid for jug	
Bat 438	Pewter lid for jug	
Bat 437	Pewter container with lid	
Bat 3031	Round pewter pot	
Bat 7112	Round pewter pot	
Bat 3220	Pewter tumbler	159/28-50
Bat 3376	Pewter goblet	204/27-36
Bat 529] Bat 563] Bat 3209]	Parts of pewter tumblers	
Bat 7068	Pewter lid fragments	
Bat 3153	Pewter handle	
Bat 461	Pewter handle	
	Fragments of pewter pots Nos. 3478, 3088, 3114, 3150, 3152, 3173, 3263, 3268, 3436, 3496, 3497, 3501, 3507, 3515, 7069, 692.	

Pewter Spoons

Bat 3073	Pewter spoon Maker's mark: Tudor rose & crown & 'G.A.'	159/37 160/3
Bat 3073A	Pewter spoon Maker's mark: Tudor rose & crown & 'B.D.W.'	160/3
Bat 3080	Pewter spoon	160/17
Bat 3081	Pewter spoon	160/18

<u>Reg. No.</u>	<u>Pewter Spoons</u>	<u>Photographs Black & White</u>
Bat 3111	Pewter spoon bowl. Maker's mark: Tudor rose & crown. Graffiti on bowl.	
Bat 3115	Part of spoon bowl	
Bat 3179	Pewter spoon. Maker's mark: Tudor rose & crown	160/21-22
Bat 3190	Part of spoon	
Bat 3200	Pewter spoon. Maker's mark: Tudor rose & crown, 'B.D.W.'	
Bat 3334	Pewter spoon bowl; Maker's mark: Tudor rose & crown.	
Bat 7091	Pewter spoon.	
Bat 7092	Pewter spoon. Maker's mark: Tudor rose & crown, 'B.D.W.'	
Bat 7094	Pewter spoon. Maker's mark: Tudor rose & crown, 'B.D.W.'	
Bat 567	Pewter spoon bowl. Maker's mark: 'BH' in crown. Graffiti on bowl	243/25-27
Bat 3180	Part of spoon bowl & handle Parts of spoons & handles.	160/19-20
	Nos. 3402, 7049, 3040, 3082, 3055, 3102, 3135, 3164, 3165, 3182, 3191, 3202, 3345, 3462, 3492, 3493, 3494, 3513, 7007, 7008, 7015, 7024, 7030, 7053, 7062, 671, 7082.	

Miscellaneous Pewter Objects

Bat 566	Pewter inkstand & inkwell	243/20-24
Bat 373	Pewter object, unidentified-possibly inkwell	
Bat 374	Pewter object - unidentified	
Bat 7113	Unidentified pewter object & fragments.	

<u>Reg. No.</u>	<u>Miscellaneous Pewter Objects</u>	<u>Photographs Black & White</u>
Bat 568	Pewter weighing dish with brass wire	
	Fragments of pewter Nos. 3173, 3263, 3268, 3436, 3496, 3497, 3501, 3507, 3515, 7069.	

NON-FERROUS 34 (LEAD)

<u>Reg. No.</u>	<u>Miscellaneous Objects</u>	<u>Photographs Black & White</u>
Bat 3041	Unidentified rectangular object with round bore 23 x 15 x 15mm	
Bat 7065	Square box with round hole and brass thread 25 x 25 x 17mm	274/13-15 22-25 337/27
Bat 3213	Bottle cap	
Bat 3214	Lead cap	204/18-20
Bat 3315	Base of lead pot or cap	
Bat 3318	Lead inkwell	
Bat 3398	Lead pot with scroll-work, possibly inkwell	
Bat 7048	2 Lead pots with scroll - work (Similar to 3398)	
Bat 7110	Lead pot with fluted sides	
Bat 7063	Lead "cup" in wooden surround	
Bat 3242	Part of lead cap	
Bat 3091	Lead ring with 4 pins Diam. 21cms. Width 3cms.	244/4
Bat 7030	Lead clip - shaped ring	
Bat 7041	Lead ring with fluted edges	
Bat 3239	Lead ring 2 cm diam.	167/28
Bat 3042	Piece of Lead ingot	
Bat 3225	Round piece of lead ingot Diam 10cm Wt. 908g.	
Bat 3288	Piece of lead plate ingot Wt. 1.4kg.	
Bat 3328	Round piece of Lead plate ingot. Wt. 567.5g.	
Bat 7099	Piece of Lead plate ingot Wt. 567.5g.	

<u>Reg. No.</u>	<u>Miscellaneous Objects</u>	<u>Photographs Black & White</u>
Bat 7052	Lead fragments-possibly part of large spoon	
Bat 7010	Lead piping with head	
Bat 3207	Piece of lead canister	
Bat 3332	Y-shaped piece of lead	
Bat 3381	Thin strip of lead	
Bat 575	Lead cover for cascable	
Bat 569	Lead stamp with 'X' on bottom	243/31,32
Bat 668	Unidentified lead object square with round hole and handle at side	243/35

Miscellaneous Lead

Bat 707	Dish-shaped piece of lead, hole in centre and pouring lip	243/28-30
Bat 449	Lead plumbing	
Bat 599	Lead pipe-part of pump	

Lead Ramrods

Bat 3223	Hexagonal ramrod Length: 6cm.	
Bat 3256	Hexagonal ramrod Length: 5cm.	
Bat 3330	Part of ramrod Length: 3.7cm.	

<u>Reg. No.</u>	<u>Lead Ramrods</u>	<u>Photographs Black & White</u>
Bat 7050	Hexagonal ramrod with wood inside Length: 4cms.	
Bat 7058	Hexagonal ramrod with wood inside Length: 3.5 cms.	274/7-8
Bat 7105	Hexagonal ramrod with wood Length: 5cms.	
Bat 7106	Hexagonal ramrod with wood Length: 5cms.	
Bat 7107	Hexagonal ramrod Length: 5.5cms.	
Bat 7109	Tip of ramrod	
Bat 4354	Hexagonal ramrod with wood	274/34

Lead Seals

Bat 3034	Lead seal - D. mark Diam: 26mm	
Bat 3037	Lead seal Diam: 20mm	201/34.35
Bat 3037A	Lead seal, 50 mark Diam: 13mm	201/50.31
Bat 3170	Lead seal-marking not clear Diam: 19mm	
Bat 3216	Lead seal-mark on one side Diam: 15mm	
Bat 3237	Lead seal - No mark Diam: 60mm	
Bat 3248	Lead seal - No mark Diam: 17mm	
Bat 3305	Lead seal 'A.V.O.C.' mark Diam: 16mm	201/18.19.26
Bat 3313	Lead seal 'A.V.O.C.' mark Diam: 16mm	
Bat 3037 13	Lead seal, R S D. Diam: 20mm	201/32-33

<u>Reg. No.</u>	<u>Lead Seals</u>	<u>Photographs Black & White</u>
Bat 3335	Lead seal 4D mark Diam: 13mm	201/15-17 28-29
Bat 3453	Lead seal 'AVOC' mark Diam: 15mm	
Bat 3495	Lead seal - Mark on 1 side Diam: 17.5mm	
Bat 3508	Lead seal Diam:	
Bat 7003	Lead seal. Spoked wheel/ square with diagonal line '4' & coil. Diam: 17mm	
Bat 7042	Lead seal 4D mark Diam: 13mm	
Bat 7055	Lead seal. Markings on both sides. Diam: 15mm	274/19-20
Bat 7056	Lead seal PM ^T W./I mark Diam: 22.5mm	274/9-11
Bat 7096	Lead seal, 5D Mark Diam: 13.5mm	
Bat 7100	Lead seal, 5D. Diam: 12.7mm	
Bat 7102	1/2 Lead seal-No mark Diam: 15mm	

Sounding Leads

Bat 3275	Sounding lead - curved Wt. 5.6kg.	
Bat 3437	Sounding lead. Wt. 2.6kg.	
Bat 3539	Sounding lead Wt. 2.7kg	
Bat 3540	Sounding lead	
Bat 379	Sounding lead Wt. 2.55kg.	243/57

<u>Reg. No.</u>	<u>Sounding Leads</u>	<u>Photographs Black & White</u>
Bat 380	Sounding lead marked X1111 Wt. 6.88kg.	243/13.14
Bat 381	Sounding lead Wt. 6.93kg.	243/11.12
Bat 430	Sounding lead	
Bat 443	Sounding lead	

Lead Sinkers

Bat 3038	Conical lead sinker Wt. 1.0kg	
Bat 7014	Conical lead sinker	
Bat 7108	Small conical lead sinker Wt. 403.1 gram	
Bat 3483	Conical lead sinker Wt. 113.5 gram	
Bat 415A	Conical lead sinker. Wt. 82.3 gram	
Bat 614	Conical lead sinker Wt. 54.59g	243/33
Bat 670	Conical lead sinker with 2 holes Wt. 374.1 gram	243/33
Bat 670A	Conical lead sinker with hole at top Wt. 180.9gram	
Bat 528	3 Conical lead sinkers	
Bat 661	Conical lead weight and 2 pieces	

Weights

Bat 3155	Round pan weight with seal on one side Wt. 23.5g Diam 22.5mm	170/20-22 192/16-18
Bat 3272	Round weight Wt. 89.8g Diam 35mm	

<u>Reg. No.</u>	<u>Weights</u>	<u>Photographs Black & White</u>
Bat 3308	Round weight IIII mark & 2 round holes Wt. 467.7g. Diam 60mm	201/20-25
Bat 3354	Round weight, II mark Wt. 952.2g. Diam 61mm	
Bat 3355	Round weight Wt. 192.8g. Diam 40mm	
Bat 3477	Round weight with hole through middle Wt. 171.3g Diam 45mm	
Bat 3546	Round weight with hole through middle Wt. 196.8g. Diam 48.5mm	
Bat 3450	Round weight Wt. 6.5g. Diam 20mm	
Bat 7034	Round weight Wt. 8.6g. Diam 25mm	
Bat 7043	Round weight Wt. 9.8g. Diam 25mm	
Bat 3327	Square weight Wt. 9.0g. 18x18mm sq.	
Bat 3159	Square weight Wt. 2.8g. 17x16mm sq.	201/36.37
Bat 7066	Square weight Wt. 8.8g. 18x19mm sq.	274/6
Bat 7067	Square weight Wt. 25.9g. 25x25mm sq.	274/5
Bat 332	Circular lead lead weight	
Bat 557	Round weight marked 'II' Wt. 888.1 g.	
Bat 558	Round weight Wt. 99.9g.	243/33
Bat 558A	Round weight Wt. 99.6g.	243/33
Bat 684	Round weight with 2 holes and marked 'IIII'. Wt. 309.7 g.	243/33

<u>Reg. No.</u>	<u>Scrap Lead</u>	<u>Photographs Black & White</u>
	Nos. 3044, 3056, 3064, 3148,	
	3157, 3158, 3175, 3249, 3277,	
	3287, 3309, 3316, 3331, 3340,	
	3381, 3435, 3439, 3444, 3452,	
	3459, 3470, 3474, 3491, 3541,	
	3544, 7025, 7031, 7037, 7047,	
	7059, 7064, 7070, 7075, 7093,	
	7104, 7111, 670, 550, 548,	
	549, 413, 484, 485, 662,	
	642, 631, 652, 598, 486,	
	705, 468B, 367B, 378, 376,	
	465, 488, 487, 492, 693.	

Musket Balls

5269	Musket balls - assorted sizes
145	Wired Musket balls

NON-FERROUS MATERIAL 35 (SILVER)

<u>Reg. No.</u>		<u>Photographs Black & White</u>
Bat 3009	Parts of silver bowl engraved with hunting motifs, flowers and scrolls. Partly restored.	
Bat 3030	Silver bedpost - incomplete	
Bat 3032	Part of engraved silver bedpost	160/4-6
Bat 3035	Silver decanter - spout & top rim missing. Engraved with flowers and scrolls & 3 Moorish figures. Restored.	135/136, 139 132/1-8 with 244/15-17 349/2, 4, 17-27
Bat 3059	Silver neck with engraving possibly from decanter similar to 3035	160/11-13 244/21-22
Bat 3177	Silver bedpost - fragmented	
Bat 3178	Part of engraved silver bedpost restored	160/7-10 349/2
Bat 3245	Silver bedpost. Engraved with scrolls and motif of a Moorish figure reclining on couch. Restored.	159/19-24 175/34-37 349/2
Bat 3432	Silver plate with engraved edge. Maker's mark - 'S.P.' & Coat of Arms. Partly eroded on one side	349/2, 3, 5-14
Bat 3069	Silver spout with Lien's head mouth. Possibly from decanter similar to 3035.	160/14-16 132/8-11
Bat 3505	Silver spout - similar to 3069. Eroded.	
Bat 3562	Silver curled handle.	
Bat 3563	Silver chalice or vase with scroll engraving and motif	
Bat 3561	Silver claw foot over ball	
Bat 3565	Engraved silver fragments - possibly base of chalice	

NON-FERROUS MATERIAL 35 (SILVER)

<u>Reg. No.</u>		<u>Photographs Black & White</u>
Bat 3573	Silver ring	
Bat 3626	Fragments of engraved silver plate	349/15-16
Bat 3605	Unidentified worn silver object	274/3-4
Bat 3594	Silver pendant	273/32-33
Bat 3643	Unidentified silver object	
Bat 3644	Triangular silver object	244/18-20
Bat 565A	Silver button	

NON-FERROUS 36 (GOLD)

Bat 3603	Gold or gilt cherub	
Bat 3568	Metal fragment with ? gold	

MISCELLANEOUS 40 (HUMAN)

<u>Reg. No.</u>	<u>Bones</u>	<u>Photographs Black & White</u>
M 3901	Skull, part of mandible & skeleton .	
A 15508	Skeleton.	
A 15507	Skull, mandible & skeleton.	
A 16316	Skull & mandible.	

[Recovered from Beacon Island]

MISCELLANEOUS 41 (ANIMAL)

<u>Reg. No.</u>	<u>Bones</u>	<u>Photographs Black & White</u>
	Pieces of bone-mammalian-109	
	Nos. 4009, 4022, 4058, 4064, 4093, 4122, 4133, 4141, 4152, 4157, 4169, 4189, 4200, 4215, 4225, 4231, 4234, 4240, 4241, 4387, 4391, 4392, 4408, 4429, 4446, 4449, 548, 552, 507, 518, 523, 579, 623, 650.	
Bat 4228	2 Fish vertebrae.	
Bat 4143	Concretion with pencil-like piece of bone.	

Miscellaneous

Bat 4121	Ivory handle inlaid with amber.	
Bat 4159	Ivory handle.	
Bat 4239	Ivory door knob.	275/35.
Bat 4242	Bone handle.	
Bat 4249	Bone or ivory ring. Diam. 25mm.	
Bat 4490	Tortoise shell comb.	

MISCELLANEOUS 42 (FRUIT, SEEDS ETC)

<u>Reg. No.</u>		<u>Photographs</u> <u>Black & White</u>
Bat 4076	Fruit stone (1)	
Bat 4491	Seeds & spices.	
Bat 682	Fruit seeds (2)	

MISCELLANEOUS 45 (RESIN, WAX ETC)

<u>Reg. No.</u>	<u>Resin</u>	<u>Photographs Black & White</u>
Bat 4046	13 Resinous beads & fragments.	
Bat 4469	Fragments of resin & amber.	
Bat 681	Amber bead.	

MISCELLANEOUS 44 (GLASS

<u>Reg. No.</u>	<u>Glass Objects</u>	<u>Photographs Black & White</u>
Bat 4033	Glass lace iron.	
Bat 708	Glass lace iron.	
Bat 657	Glass lace iron.	
Bat 4137	Blue glass bead.	
Bat 4145	Blue glass bead.	
Bat 4130	Small faience bead.	
Bat 709	Striped bead.	
Bat 655	Striped bead.	
Bat 4469	Small glass button.	
Bat 4219	Black button (obsidian)	
Bat 4078	Clear glass lion head	
Bat 4156	Clear glass lion head	

Bat 657	Glass lace iron.
Bat 4137	Blue glass bead.
Bat 4145	Blue glass bead.
Bat 4130	Small faience bead.
Bat 709	Striped bead.
Bat 655	Striped bead.
Bat 4469	Small glass button.
Bat 4219	Black button (obsidian)

<u>Reg. No.</u>	<u>Glass Fragments</u>	<u>Photographs Black & White</u>
Bat 4000	21 Green glass bottle bases	
Bat 4004	1 Neck of green glass bottle	
Bat 4008	17 Small green glass fragments.	
Bat 4011	50 Flat, clear glass frags.	
Bat 4013	1 Piece of glass with square pattern.	
Bat 4053	Glass fragments in concretion.	
Bat 4077	Glass fragments (from same bottle)	
Bat 4079	Patterned glass fragments	279B/19-20
Bat 4092	3. Pieces of green glass (Neck & 2 frags)	
Bat 4142	Glass frags. in concretion.	
Bat 4153	Rim of bottle with some pewter attached.	
Bat 4160	8 Bottle neck fragments	
Bat 4197	1 Piece of patterned glass, ornamented edge.	
Bat 4218	Glass fragments	
	Green glass fragments. Nos. 356, 367, 429, 536, 573 583, 616, 620, 621B, 624A, 648 665, 716, 717, 718, 719, 720.	
	Clear, patterned glass fragments Nos: 721, 4487, 4488.	
	Clear, plain glass fragments No : 722.	

MISCELLANEOUS 46 (ROPE, STRING ETC)

<u>Reg. No.</u>	<u>Leather</u>	<u>Photographs Black & White</u>
Bat 4024	Leather shoe tongue	
Bat 4034	Leather shoe	
Bat 4055	Small leather strap with 2 holes	
Bat 4081	Leather shoe heel	
Bat 4471	Leather strap	
Bat 4495	Leather from armour breast- plates	
	Leather fragments Nos: 4026, 4038, 4044, 4049 4052, 4071, 4112, 4402 4482, 399A.	

Rope

Pieces of rope
Nos: Bat 4039, 4047, 4050, 4072,
4168, 4221, 4230, 4244, 4399, 4424,
4458, 4466, 4451, 577, 581, 683.

Reed

Bat 4087	Piece of reed with coiled string attached
Bat 4125	Horse hair [from between timbers]

MISCELLANEOUS 47 (FABRIC)

<u>Reg. No.</u>		<u>Photographs</u> <u>Black & White</u>
Bat 4027	Wich from brass oil lamp Bat 3079	
Bat 4447	2 Pieces of cloth remnants (1 in concretion)	
Bat 4460	Piece of coarse weave cloth 9 x 3cm	
Bat 4492	Piece of lace	
Bat 3131A	Fabric from patch-box (3131)	
Bat 392	Concretion with fabric ($\frac{1}{2}$ knife handle)	
Bat 341	Remains of purse	
Bat 8410	Canvas cover from cannon ball concretion	

MISCELLANEOUS 48 (MARINE)

<u>Reg. No.</u>	<u>Coral Beads</u>	<u>Photographs Black & White</u>
Bat 4002	18 Large coral beads	
Bat 4017	12 Medium coral beads	
Bat 4019	15 Small coral beads	
Bat 709	3 Coral beads	
Bat 656	1 Coral bead	

Shells

Bat 4415	Large sea shell similar to baler
Bat 4090	Limpet shell

TIMBER 61 (SHIP'S MAIN TIMBERS)

<u>Reg. No.</u>		<u>Photographs</u> <u>Black & White</u>
	CODE:	
	A - knees, beams, riders	
	B - ceiling	
	C - frames	
	D - inner, outer planking	
	E - outer, outer planking	
	Sk - skin	
	<u>Raised in 1973.</u>	
Bat 6000)		
Bat 6001)		99/7 - 10
Bat 6003	C 1	096
Bat 6004	Small piece	
Bat 6005)		
Bat 6006)		
Bat 6007)		
Bat 6008)	Miscellaneous pieces	
Bat 6009)		
Bat 6010)		
Bat 6011	D 3	075/15 - 22
Bat 6012	D 5	076/23 - 37
Bat 6013	D 4	076/3 - 14
Bat 6014	E 6	97/18 - 22
Bat 6015	D 4	098/055
Bat 6016	C	055, 096
Bat 6017	C 18	077/ 8 - 19
Bat 6018	C 16	077/20-26, 053

<u>Req. No.</u>	<u>Timber 61</u>	<u>Photographs Black & White</u>
Bat 6019	C (rib with stay picket)	096/31-33, 055
Bat 6020	C 9	077/1-7, 095
Bat 6021	C 10	098, 055
Bat 6022	C (rib 3)	098/7-10, 17-19 095/17-19, 055, 056
Bat 6023	C 15	097
Bat 6024	C 7	078/10-18, 056
Bat 6025) Bat 6025A)	C (rib 4) C	098, 056, 059
Bat 6026	C (rib)	097, 056
Bat 6027	C 8	096, 056
Bat 6028	C 5	99/4-6, 07/4-7
Bat 6029	C 14	092/28-37, 058
Bat 6030	D 1	093/10-15
Bat 6031	D 2	093/2-9
Bat 6032	E 1	091/16-21
Bat 6033	E 3	093/34-37 195/2-4
Bat 6034	E 4	091/10-15
Bat 6035	C 6	097, 059
Bat 6036	C (rib)	096, 059
Bat 6037	Unknown	098, 059
Bat 6038	E 2	097/23-26 073
Bat 6039	C 19	079/19-22
Bat 6040	C 20	090/23-34
Bat 6041	C 21	080/3-8 079

<u>Reg. No.</u>	<u>Timber 61</u>	<u>Photographs Black & White</u>
Bat 6042	C 22	082/3-8
Bat 6043	C 23	091/22-27
Bat 6044	C 24	091/22-27
Bat 6045	C 25	090/35-38 091/2-8
Bat 6046	C (rib 25)	
Bat 6047	C 27	091/28-33 073
Bat 6048	C (rib 27)	091/34-36
Bat 6049	C 28	080/22-28 073
Bat 6050	B	
Bat 6051	B	
Bat 6052	C 27	
Bat 6053	C 28	
Bat 6054	C & B	
Bat 6055	C 24	093/24-33
Bat 6056	C 21	093/16-24
Bat 6057	B	079/23-26
Bat 6058	B	078/27-28
Bat 6059	B	078/25-26
Bat 6060	B	079/7-8
Bat 6061	B	079/33-34
Bat 6062	B	079/11-14
Bat 6063	B	079/17-18
Bat 6064	(N. 13)	079/35-37

<u>Reg. No.</u>	<u>Timber 61</u>	<u>Photographs Black & White</u>
Bat 6065	C 21	079/27-32
Bat 6066	(N.28)	
Bat 6067	Planking -- unknown	092/23-26
Bat 6068	Unknown	092/19-23
Bat 6069	C 28 S	050/9-11
Bat 6-70	C & B	078/19-23
Bat 6070	D ⁰	
Bat 6072	D 9	082/9-13
Bat 6073	D 8	082/14-19
Bat 6074	D 4	082/20-25
Bat 6075	D 8	082/26-29
Bat 6076	D 3	082/30-35
Bat 6077	D 2	082/36-37
		083/3-6
Bat 6078	D 6	083/7-12
Bat 6079	(P. 1A5)	083/13-14
Bat 6080	(P)	083/15-16
Bat 6081)	Sk	083/17-20
Bat 6081A)	Sk	
Bat 6082A)		
Bat 6082B)	D 7 complex	083/21-32
Bat 6082C)		
Bat 6083	D 3	083/33-34
Bat 6084	D 7	083/35-37
		086/2-5
Bat 6085	D 1	086/26-27

<u>Req. No.</u>	<u>Timber 61</u>	<u>Photographs Black & White</u>
Bat 6086	D 0 & D 1	086/22-25
Bat 6087	(Plank short bit)	086/16-19
Bat 6088	Sk	086/28-31
Bat 6089	D 7	086/36-37
Bat 6090	(Plank)	086/13-15
Bat 6091	D 10	086/32-34
Bat 6092A & B	(Plank)	086/20-21
Bat 6093A)	Concretion with bolts and wood	086/35
Bat 6093B)		
Bat 6094	Concretion with bolt impression	
Bat 6095	D 6	087/7-10
Bat 6096	D 6	087/3-6
Bat 6097	D 5	086/6-12
Bat 6098	E 2	087/11-16
Bat 6099	E 4	087/17-25
Bat 6100	E 3	087/26-33
Bat 6101	E 2	087/34-35
Bat 6102	E 5	088/9-14
Bat 6103	E 5	088/2-8
		187/35-37
Bat 6104	E 3	088/15-18
Bat 6105	E 5	088/19-20
Bat 6106	E 6	088/21-26

<u>Reg. No.</u>	<u>Timber 61</u>	<u>Photographs Black & White</u>
Bat 6107	E 5	088/27-30
Bat 6109	E 6	088/31-36
Bat 6110	E 4	088/37 090/2-8
Bat 6111	Plank fragment	
Bat 6112	C - loose	197/15-16
Bat 6113	C 25	080/12-17
Bat 6114	C (mid rib bit)	078/32-25
Bat 6115	C (rib end)	
Bat 6116	C (rib end)	078/36-37
Bat 6117	(Plank)	
Bat 6118	(Plank)	080/18-19
Bat 6119	(Rib?)	
Bat 6120	C (rib)	078/29-31
Bat 6121	3 bits	079/9-10 080/20-21
Bat 6122	C (rib fragment)	079/4
Bat 6123	Plank fragment	079/5-6
Bat 6124	Plank fragment	
Bat 6125	C (rib end)	
Bat 6126	Fragment	
Bat 6127	Fragment	
Bat 6128	Dowel fragment	
Bat 6129	3 bags of fragments	
Bat 6130	A 9 knee on E side, near gunport	077/29-33

<u>Reg. No.</u>	<u>Timber 61</u>	<u>Photographs Black & white</u>
Bat 6131	E 4	078/3-7
Bat 6132	D (top plank N 9)	078/8-9 068
Bat 6133	Unknown	099/2-3
Bat 6134	E 2	
Bat 6135	Part of plank	099/11-13
Bat 6136	Sk 8	099/31-34
Bat 6137	Sk 7	099/37, 100/3-5
Bat 6138	Sk	100/6-9
Bat 6139	Sk 4	100/6-9
Bat 6140	Sk	100/6-9
Bat 6141	Sk 8	099/27-30
Bat 6142	Sk 8	099/35-36
Bat 6143	Sk 7 top. Above Sk 7	099/14-19
Bat 6144	Sk	099/14-19
Bat 6145	Sk	099/14-19
Bat 6146	Sk 7	099/20-26
Bat 6147	Sk 5	100/10-12
Bat 6148	Sk 6	100/10-12
Bat 6149	Sk 6	100/13-16
Bat 6150	Sk 6	100/17-18
Bat 6151	Sk	100/17-18
Bat 6152	Sk 5	100/21-24
Bat 6153	Sk	100/19-20
Bat 6154	Sk	

<u>Rec. No.</u>	<u>Timber 01</u>	<u>Photographs Black & White</u>
	<u>Raised in 1974</u>	
Bat 6160	Part of E 7 connects with 6162	260/
Bat 6161	E 8	260/3-6
Bat 6162	E 7 + connected to 6160	260/
Bat 6163	Unknown (from 6160)	
Bat 6164	Sk (from 6160)	
Bat 6165	1 bag of timber fragments from cannon ball concretion	
Bat 6166	2 bags of timber fragments	
Bat 6167	C 29 - C 29 W	261/16-22
Bat 6168	D 10 (plank next to gunport)	264/27-31
Bat 6169	C 28 W	261/28-36
Bat 6170	C 30	261
Bat 6171	C 27	265/5A
Bat 6172	C 25	265/13-16
Bat 6173	Unknown - end of C-30	265/5-9
Bat 6174	C 27	264/20-26
Bat 6175	D 11	263/14-18
Bat 6176	D 12	263/14-18
Bat 6177	C 30	261/22-27
Bat 6178	Gunport inner skin	
Bat 6179	Loose timber	265/29-31

<u>Recd. No.</u>	<u>Timber 61</u>	<u>Photographs Black & White</u>
Bat 6180	E 6	264/14-19
Bat 6181	C 26	
Bat 6182	D 6	263/20-27
Bat 6183	E 6	263/29-37
Bat 6184	D 5	264/3-5
Bat 6185	B 7	264/6-10
Bat 6186	Unknown	264/11-13
Bat 6187	Unknown - east planking	264/22-36
Bat 6188	B 10	264/36
		265/2-5
Bat 6189	Unknown	265/5-7
Bat 6190	Unknown	265/5-9
Bat 6191	Unknown	
Bat 6192	Unknown	265/9-11
Bat 6193	Unknown	265/9-11
Bat 6194	D 4	265/16-19
Bat 6195	Unknown	265/20-22
Bat 6196	B 9	265/23-25
Bat 6197	Unknown	265/26-28
Bat 6198	Unknown	
Bat 6199	B 2	265/26-28
Bat 6200	D 6 ² part of D 6	265/26-28
Bat 6201	B 3	265/33-34
Bat 6302	E 4	267/25-26

<u>Reg. No.</u>	<u>Timber 61</u>	<u>Photographs Black & White</u>
Bat 6203	E 5	267/27-28
Bat 6204	D 0, D 1, D 2	267/35-36
Bat 6205	D 0	
Bat 6206	D 4	267/31-32
Bat 6207	E 2 (with 6208 and 6219)	
Bat 6208	E 3 (with 6207 and 6219)	267/29-30
Bat 6209	D 4	267/23-27
Bat 6210	D 3	267/7-9
Bat 6211	D 8	267/15-16
Bat 6212	D 5	267/17-18
Bat 6213	D 2	
Bat 6214	D 2	267/21-22
Bat 6215	D 6	267/5-6
Bat 6216	D 7	267/10-11
Bat 6217	D 9	267/13-14
Bat 6218	Gundeck floor A 4	267/33-34
Bat 6219	E 2-3 (with 6207 and 6208)	
Bat 6220	Cleat on E 6	274/28-32
Bat 6221	Two floor timbers between A 5 and A 6 [see 6222]	282/7-9
Bat 6222	Two floor timbers between A 5 and A 6	282/7-9
Bat 6223	A 7	279B/21-27

<u>Reg. No.</u>	<u>Timber 61</u>	<u>Photographs Black & White</u>
Bat 6224	Wedge from below elbow A 7	282/4-5
Bat 6225	Support at side of knee 6226	2793/32-38
Bat 6226	Support at side of knee on transeom	2793/32-38
Bat 6227	A 6	291/36 292/6-8
Bat 6228	A 1	292/15-19
Bat 6229	A 3	292/9-14
Bat 6230	Part of A 3	291/28-34
Bat 6231	A 4	291/22-23
Bat 6232	Floor skin similar to 6221	291/24-27
Bat 6233	Between A 2 and A 3	
Bat 6234	Unknown	292/23-27
Bat 6235	Bug from transeom	292/23-27
Bat 6236	Loose find	292/20-22

<u>Reg. No.</u>	<u>Timber 61</u>	<u>Photographs Black & White</u>
	<u>Raised prior to 1973</u>	
Bat 410)	Pieces of timber	
to)		
413)		
Bat 451)	Fragments of oak floor timbers	
to)		
453)		
Bat 459	Carved piece of timber	
Bat 522	Piece of timber	
Bat 577	Wood joined by rope	
Bat 581	Piece of wood with rope	
Bat 621A	Pieces of wood	
Bat 714	Thin strip of wood	
Bat 725	Wood fragments	

TIMBER 62 (ARMAMENT)

<u>Reg. No.</u>	<u>Canister Shot</u>	<u>Photographs Black & White</u>
Bat 4394	Canister shot - wood Diam. 14-15 cm	275A/23-24
Bat 4395	Canister shot - wood Diam. approx 9 cm	275A/29
Bat 4398	Canister shot - wood	275A/28
Bat 4397	Fragments of canister shot. Diam. 9 cm	275A/27
Bat 4405	Wood fragments of canister shot - band mark	
Bat 4406	Canister shot - wood Diam. 9 cm	
Bat 4410	Canister shot - wood Diam. 9 cm	
Bat 4411	Canister shot Diam. 10 cm	
Bat 4412	Canister shot Diam. 7.5 cm	
Bat 4413	Canister shot - nail shrapnel inside	
Bat 4414	Fragments of canister shot - heavily concreted	
Bat 4422	Canister shot filled with nails. Diam 11 cm	
Bat 4423	Canister shot - Diam. 7.5 cm	
Bat 4435	Canister shot - wood exterior	
Bat 4436	Canister shot filled with nails. Diam. 8.1 cm	
Bat 4440	Canister shot - wooden case. Diam. 9.5 cm Length 27 cm	
Bat 4441	Canister shot - Diam. 14.4 cm Length 36 cm	

<u>Reg. No.</u>	<u>Canister Shot</u>	<u>Photographs Black & White</u>
Bat 4442	Pieces of canister shot	
Bat 4443	Canister shot - broken Diam. 10 cm Length 32 cm	
Bat 4444	Canister shot in 2 pieces. Diam. 11.0 cm	
Bat 4445	Contents of canister shot	
Bat 4457	Fragments of canister shot. Diam. 12.5 cm	
Bat 4474	Canister shot Diam. 10.5 cm Length 35 cm	
Bat 4475	Canister shot, filled with nails. Diam 8 cm	
Bat 4483	Canister shot - square nail 'cast' holes Diam. 8 cm Length 17 cm	

<u>Reg. No.</u>	<u>Musket Stocks</u>	<u>Photographs Black & White</u>
Bal 4383	Wooden musket stock	275A/15-18
Bal 4384	Musket stock fragment from separate gun	275A/19-22
Bal 4448	Wood - possibly part of musket stock	

Miscellaneous

Bal 4220	Wooden dagger blade
Bal 4235	Part of scabbard
Bal 4493	Cannon plug

TIMBER 63 (CARGO)

<u>Req. No.</u>	<u>Small Wooden Barrel</u>	<u>Photographs Black & White</u>
Bat 4377	Barrel lid - 2 pieces with 2 dowel holes. Marks on top	275A/5-10
Bat 4378	Barrel lid - 2 pieces with dowel holes and 'W.H.' mark	275A/5-10

Barrel Staves

Nos 4326, 4363, 4364,
4365, 4366, 4367, 4368,
4369, 4370, 4371, 4372,
4373, 4374, 4375, 4449

Bat 4381	Small fragments of wooden barrel hoop - semicircular in cross section
----------	--

TIMBER 64 (FITTINGS)

<u>Ref. No.</u>	<u>Pulley Blocks</u>	<u>Photographs Black & White</u>
Bat 4088	Single wooden pulley block	
Bat 4089	Double wooden pulley block	200/30-38
Bat 4364	Pulley block - 4 pieces Shell, spindle and 2 checks	274/37-38 275A/2
Bat 4404	Pulley block, complete but in fragments	
	<u>Dowels etc.</u>	
Bat 4113	Piece of wood peg 11 cm long	
Bat 4167	Wooden wedge	
Bat 4211	Wooden rod Length 215 mm	
Bat 4357	Wooden rods	
Bat 4476	Small wooden wedge	
Bat 4478	Tapered dowel with iron core	
Bat 4479	Wooden dowel - hollow core	
Bat 4480	Wooden dowel - hollow core, concreted in 3 pieces	
Bat 4481	Wooden dowel - hollow core, in concretion	
Bat 377	Wooden dowel	

TIMBER 64 (FITTINGS)

<u>Reg. No.</u>		<u>Photographs Black & White</u>
Bat 4247	Unidentified mast or spar	
Bat 4379	Door with 2 brass hinges. 217 mm wide	275A/11, 13
Bat 4380	Door with brass pin. 214 mm wide	275A/14
Bat 4433	Unidentified wooden object - probably support	
Bat 4461	Wooden moulding 15.5 cm long	
Bat 459	Carved piece of timber	
Bat 4355) Bat 4356)	Wood item nailed to B planking with 2 nail holes located just below floor at deck. Both similar and connected perpendicularly	
Bat 534	Timber and iron brackets - parts of ship	
Bat 4494	Decorated piece of wood	

TIMBER 65 (TOOLS)

<u>Reg. No.</u>	<u>Wooden Handles</u>	<u>Photographs Black & White</u>
Bat 4028	Wooden handle with metal thread	
Bat 4040	Wooden handle with square metal bore	
Bat 4041	Wooden handle with flat metal bore	
Bat 4042	Wooden handle	
Bat 4051	Wooden handle	
Bat 4059	Small piece of wood with square bore - possibly part of handle	
Bat 4066	Wooden handle	
Bat 4067	Wooden handle with metal bore	
Bat 4068	Wooden handle	
Bat 4069	Wooden handle with wooden bore	
Bat 4070	Wooden handle	
Bat 4082	Piece of wooden handle 12 x 4 x 3 cm	
Bat 4083	Piece of flat wood - possibly handle	
Bat 4084	Wooden handle	
Bat 4085	Round, chisel-type handle	
Bat 4125	Wire whipped handle	
Bat 4132	4 Wooden handles	
Bat 4138	Wooden handle	
Bat 4166	Wooden handle	

<u>Reg. No.</u>	<u>Wooden Handles</u>	<u>Photographs Black & White</u>
Bat 4224	Part of wooden handle	
Bat 4243	Part of wooden handle	
Bat 4350	Parts of large wooden handle	
Bat 4351	Parts of large wooden handle	
Bat 4352	Parts of thin wooden handle	
Bat 4353	Parts of small wooden handle	274/33
Bat 4403	Fragment of wooden handle	
Bat 4416	Fragment of wooden handle	
Bat 4425	Wood handle with 4 inlaid black bands	
Bat 4426	Wooden handle, shaped by lathe	
Bat 4434	Wood handle from sledge hammer	2798/2-4
Bat 4438	Wood handle - 30 cm long	
Bat 4439	Small wooden handle - part of musket ramrod 11 cm long	
Bat 4456	Wooden handle in concretion	
Bat 4462	Wooden dowel or handle	
Bat 4463	Wooden handle - 6 cm long	
Bat 4472	Wooden handle	
Bat 4484	Wooden handle - 7 cm long 5 cm wide	
Bat 712	Wooden handle	
Bat 713	Wooden handle	

TIMBER 66 (BARK)

Req. No.Photographs
Black & White

Bat 4358

Piece of birch bark

Bat 4407

Fragment of birch bark

Bat 4464

Strip of birch bark

TIMBER 67 (MISCELLANEOUS)

<u>Reg. No.</u>		<u>Photographs Black & White</u>
Bat 4300	Wooden comb	
Bat 4401	Unidentified wooden object - round and turned on a lathe	
Bat 4452	Chess piece	279B/16
Bat 4032	Wooden button with wire threads	
Bat 4043	Wooden lung	
Bat 4350	Wood from copper powder shovel	
Bat 4385	Wood from disintegrated powder shovel	
Bat 4393	Unidentified wood fragment - alternate pink and black colouring	
Bat 581	Fragment of wood with rope	
Bat 566	Wood from inkwell	
	Miscellaneous pieces of wood	
	Nos 4420, 4427, 4432, 4494 4005, 4006, 4048, 4116, 4149, 585, 621A, 714, 725	
Bat 4497	Wooden Tally stick	

FERROUS 81 (ARMAMENT)

<u>Reg. No.</u>	<u>Cannon</u>	<u>Photographs</u> <u>Black & White</u>
Bat 8720	No. 1 Iron cannon Length: 278 cms. Bore:110mm	
Bat 8423	Cascable of cannon 1.	
Bat 8721	No 2. Iron cannon Length: Bore:120mm	
Bat 8424	Cascable of cannon 2	
Bat 8722	No. 3 Iron cannon Length: Bore:	
Bat 3302	Muzzle of cannon 3	
Bat 8723	No 4 Iron cannon length: Bore:	
Bat 8724	No 5 Iron cannon Length: Bore:110mm	
Bat 8725	No. 6 Iron cannon [Not yet raised]	
Bat 8726	No 8. Iron cannon	
Bat 8727	No. 9 Iron cannon [Not yet raised]	
Bat 8728	No. 10 Iron cannon [Not yet raised]	
Bat 8729	No. 11 Iron cannon [not yet raised]	
Bat 8730	No. 12 Iron cannon [Not yet raised]	
Bat 8731	No. 13 Iron cannon Length: Bore:90mm	
Bat 8732	No. 14 Iron cannon [Not yet raised]	
Bat 8735	No. 27 Iron cannon length: 259cms Bore:95mm	

Reg. No.Cannon BallsPhotographs
Black & WhiteRaised in 1972-74

104	Diam:	Approx 8 cms.
77	Diam:	Approx 8.5 cms.
7	Diam:	Approx 9.0 cms.
23	Diam:	Approx 9.5 cms.
185	Diam:	Approx 10 cms.
13	Diam:	Approx 10.5 cms.
85	Diam:	Approx 11 cms.
34	Diam:	Approx 11.5 cms.
3	Diam:	Approx 12.0 cms.
2	Diam:	Approx 13.0 cms.
3	Diam:	Approx 13.5 cms.
61	Diam:	Approx 14.0 cms.
15	Diam:	Approx 14.5 cms.
1	Diam:	Approx 15.0 cms.
9		Not measured.

Total : 622

Barshot

1	Diam:	Approx 7.5 cms.
2	Diam:	Approx 8.0 cms.
1	Diam:	Approx 9.0 cms.
2	Diam:	Approx 10.0 cms.
3	Diam:	Approx 10.5 cms.

<u>Reg. No.</u>	<u>Barshot</u>	<u>Photographs Black & White</u>
	3 Diam: Approx 11.0 cms.	
	2 Diam: Approx 11.5 cms.	
	2 Diam: Approx 12.5 cms.	
	2 Diam: Approx 14.0 cms.	
	1 Not measured	
	<u>Total: 19</u>	
Bat 8479, 8480, 8481	Expanding barshot - square ends	
Bat 8625	Iron barshot 19cm long.	

Spike Shot

1	Diam: Approx 7.5 cms.
1	Diam: Approx 8.0 cms.
1	Diam: Approx 8.5 cms.
2	Diam: Approx 10.0 cms.
2	Diam: Approx 11.0 cms.
1	Diam: Approx 12.5 cms.
2	Diam: Approx 13.0 cms.
	<u>Total: 10</u>

FERROUS 81

<u>Reg. No.</u>	<u>Bomb Shot</u>	<u>Photographs Black & White</u>
67	Diameter 8 cms.	
81	Diam. 8.5 cms.	158/26-28 (Bat 3290)
1	Diam. 9.0 cms.	
1	Diam. 10.0 cms.	
Total: 150		

Chain Shot

5 Diameter 9.5 cms.
1 Not measured

Total: 6

Grenades

Bat 8529	Grenade - string around fuse. 279B/11-14 Diam: 8.6 cms. Wt. 1.20 kg.
Bat 8530	Grenade - wood plug in fuse. Diam: 8.5 cms. Wt. 0.85 kg.
Bat 8531	Grenade - wood plug with string. Diam: 8.5 cms. Wt. 0.75 kg.
Bat 8532	Grenade - encased in concretion.
Bat 8533	Grenade - wrapped in 4 strings - plug obscured. Diam: 8.7 cms. Wt. 0.80 kg.
Bat 8534	Grenade - wooden plug Diam: 8.6 cms.

<u>Reg. No.</u>	<u>Langrel Shot</u>	<u>Photographs</u> <u>Black & White</u>
	9 x 1/2 Langrel - Diam approx. 9 cms.	
	6 x 1/2 Langrel Diam. 1 whole Langrel 9.5 cms.	
	3 x 1/2 Langrel Diam. 2 whole Langrel 10 cms.	
	1 x 1/2 Langrel - Diam. 10.5 cms.	
	1 Whole Langrel - Diam. 12.5 cms.	
	3 Whole & 3 x 1/2 Langrel - not measured	144/2-11, 183/35- 38

Cannon Balls etc

Raised prior to 1972.

8 Cannon Balls.
[Nos: 396, 428, 435, 537, 580]

Cannon ball fragments.
[Nos: 387, 389, 409, 428, 525,
531, 584, 637, 634]

6 Barshot & fragments.
[Nos: 384, 385, 389, 427, 434,
444]

But 388 Chain shot.

Replicas

But 3548R Piece of barshot
But 3048R Barshot - half
But 3048AR Barshot
But 3060R Half of barshot
But 3547R Spike shot. Diam. 11 cms.
But 641R Piece of square barshot

Rep. No.Photographs
Black & White

Round, tube-shaped concretions - possibly from inside musket barrels.

Nos. 4147, 4165, 4171, 4172.

Bat 396 Bomb Shot

Bat 532 Iron cannon ball bar

Bat 576 Iron cannon ball bar

Bat 8740 Cannon ball fragments

FERROUS 82 (SHIP'S FITTINGS)

<u>Reg. No.</u>		<u>Photographs</u> <u>Black & White</u>
Bat 3516 to 3538	Chainplate and chain, pieces & fragments	
Bat 8413 to 8421	Chainplate, links and dead eyes	
Bat 8136	Piece of chain	
Bat 3036	Iron ring & pin	
Bat 8026	Iron ring	
Bat 8034	Part of iron ring	
Bat 8478	Concretion with iron rings	
Bat 8095	Pieces of iron rod & eye	
Bat 8137	Iron bar	
Bat 8268	Piece of iron bar	
Bat 8134	Iron 'spoon'	
Bat 8135 .4	Iron spoons	
Bat 534	Timber & iron brackets	
Bat 8039	Round object - possibly bolt cap	
Bat 8072	Unidentified piece of iron	

Replicas

Bat 3549R	Chain links - broken [From concretion 3060]
Bat 3167R	Ring and eye
Bat 3016R	Iron bolt & wood fragment
Bat 3550R	Bolt head & wood fragment [From concretion 3061]

<u>Reg. No.</u>	<u>Replicas</u>	<u>Photographs Black & White</u>
Bat 3551R	Iron bar & wood fragment	
Bat 522R	Iron bar with wood	
Bat 595R	2 Iron rods	
Bat 6128R	Iron rod	
Bat 3554R	3 Unidentified objects [From concretion 3058]	
Bat 4109R	Curved circular piece of iron	
Bat 4117R	Iron & Wood	
Bat 8732R	Iron bar from concretion	
Bat 8733R	Iron bar from concretion	

FERROUS 85 (TOOLS ETC)

<u>Reg. No.</u>	<u>Photographs Black & White</u>
Bat 3062	1 Nail
Bat 3078	Nails
Bat 3301	Barrel of nails
Bat 4114	Piece of nail concretion
Bat 8266	1 Nail
Bat 448	1 Nail
Bat 343	Fragments of iron nails
Bat 4434	Sledge hammer
Bat 3010R	Replica- iron bolt & wood fragment
Bat 3058R	Replica - 2 small bolts
Bat 3061R	Replica - bolt head & wood fragment
Bat 8718	Iron handle
Bat 8719R	Replica - grappling iron or grapnel
Bat 8624	Unidentified iron tool

FERROUS 84 (CARGO)

<u>Reg No.</u>		<u>Photographs</u> <u>Black & White</u>
Bat 667	Barrel hoop fragments	
Bat 337	Part of hinge from chest	
Bat 336	Hinge from chest	
Bat 345	Part of key	
Bat 344	Iron key	
Bat 4430	Concretion with complex hollow - mold of lock	
Bat 8491	Iron barrel hoops	

Replicas

Bat 4430R	Replica of padlock	
Bat 3058R	2 Nails	
Bat 3553R	Part of barrel hoop [From concretion 3056]	

FERROUS 86 (CONCRETIONS)

<u>Reg. No.</u>	<u>Photographs</u> <u>Black & White</u>
Bat 8734	Concretions with impression of gilded armour breast-plates
Bat 8734R	Replicas of breast plates taken from above concretion

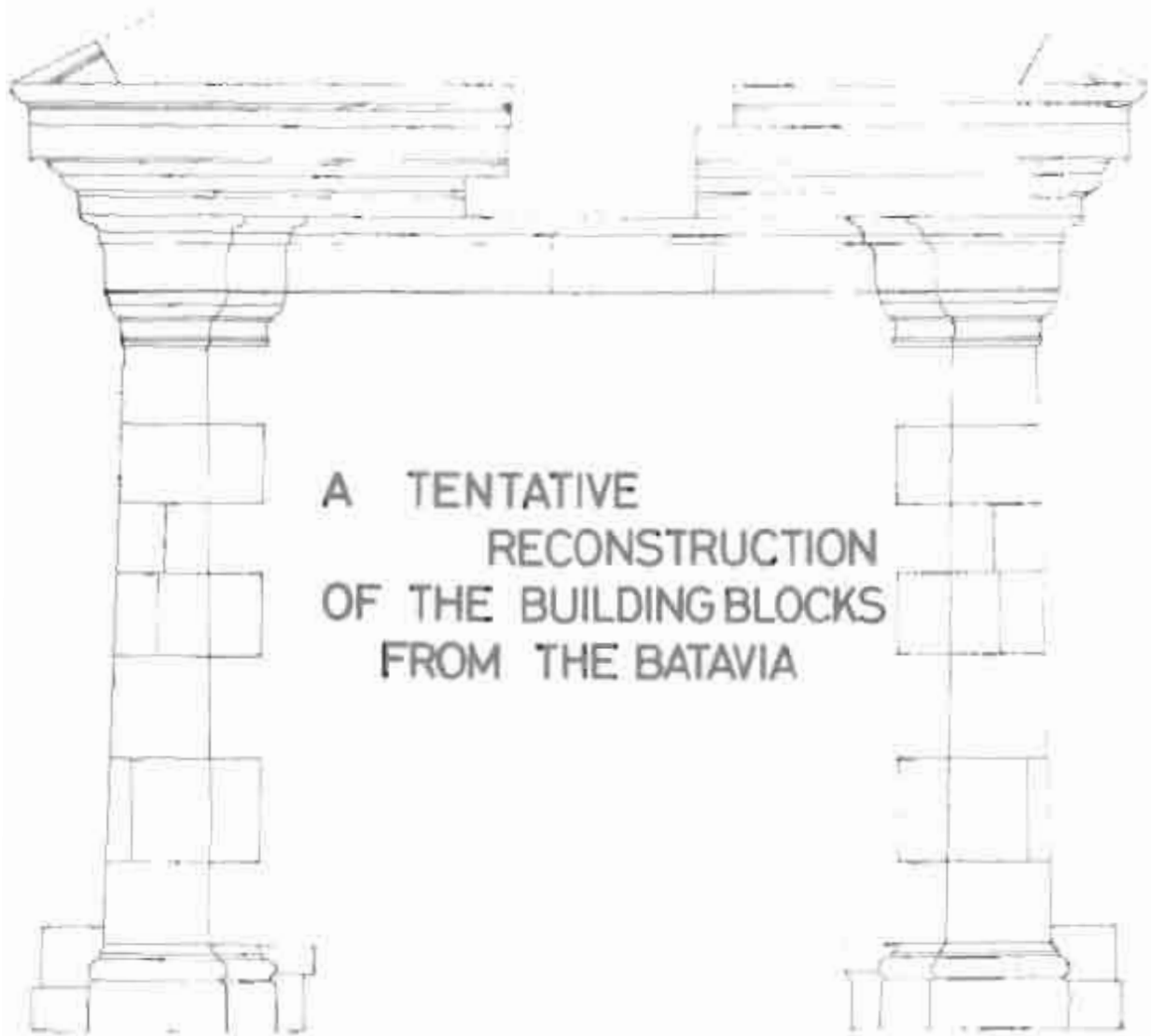
Concretions:

Nos. Bat. 4096, 4110, 4111,
4349, 3012, 3019, 3020, 3021,
3022, 3023, 3024, 3025, 3028,
3033, 3049, 3050, 3051, 3061,
3065, 3076, 3118, 3139, 3140,
3141, 3168, 3169, 3193, 3265,
3266, 3282, 3312, 3353, 3391,
3401, 3405, 3409, 3461, 3471-
3473, 8003, 8004, 8038, 8040,
8043, 8094, 8262- 8264, 8267,
8412, 8426, 8478, 553, 555.

Fragments of iron:

Nos. 336, 629, 630, 695, 511,
447, 674, 480, 462.

STONE



A TENTATIVE
RECONSTRUCTION
OF THE BUILDING BLOCKS
FROM THE BATAVIA

BAT 1000 TO BAT 1132

0 — 1
Metre

STONEWARE JUGS

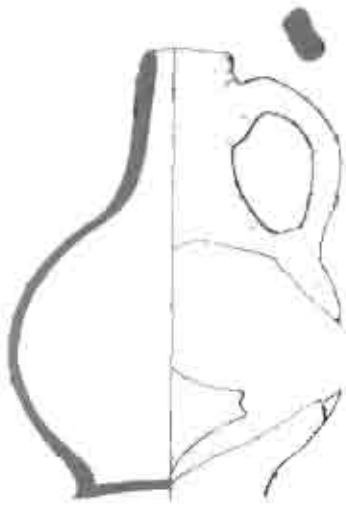


BAT 2240

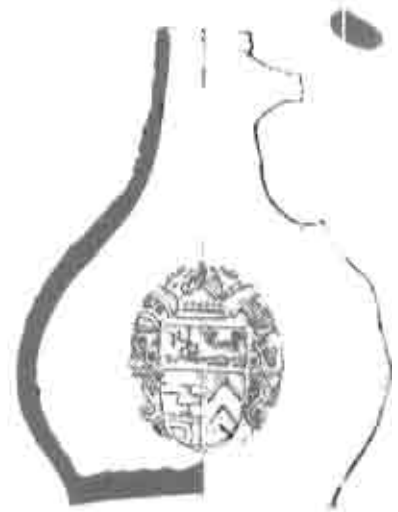
BAT 2147

0 5
Cm

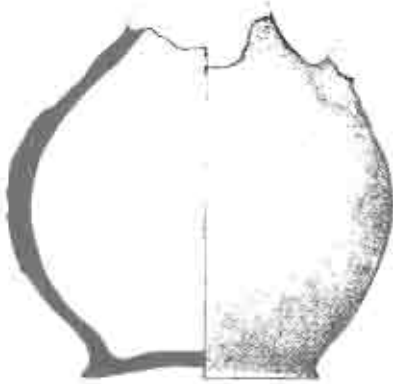
STONEWARE JUGS



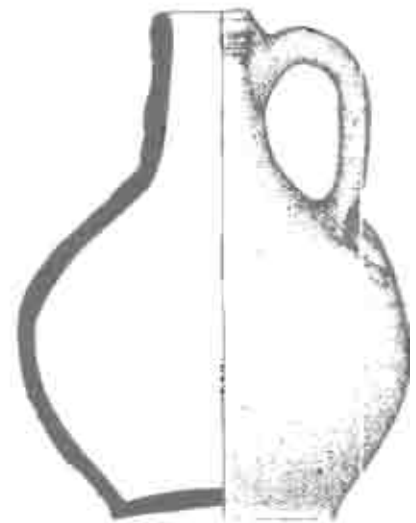
BAT 2579



BAT 2372



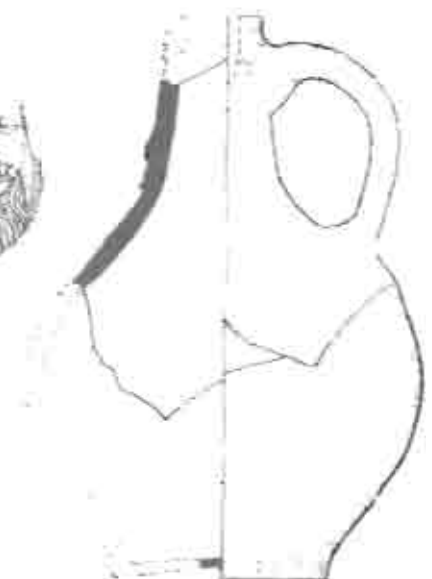
BAT 2150



BAT 2283



BAT 2325



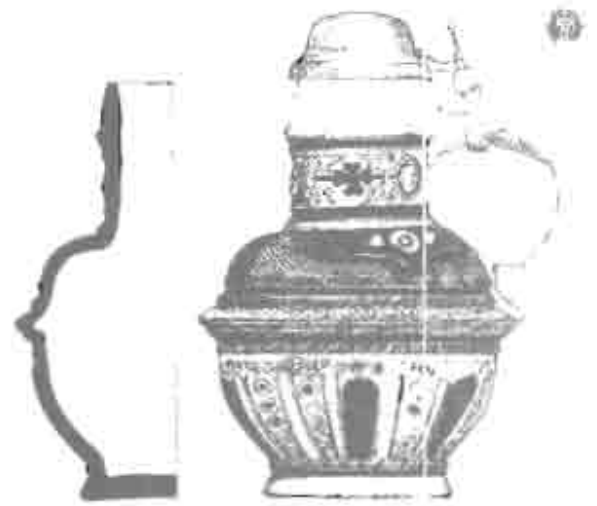
BAT 2259

0 5
Cm

STONEWARE JUGS



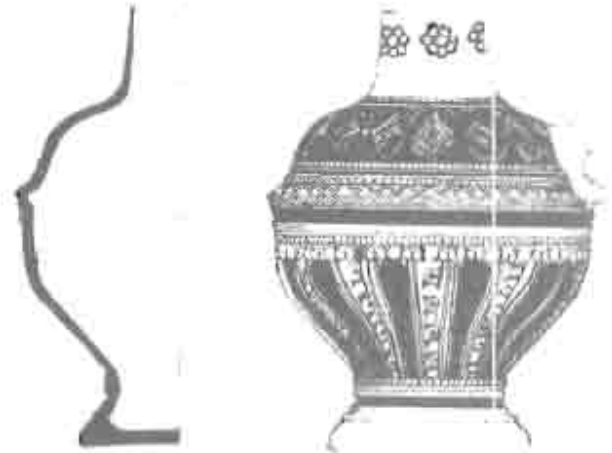
BAT 2303



BAT 2358



BAT 329



BAT 328

0 5
Cm



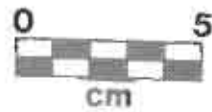
0 8mm

BAT 2303

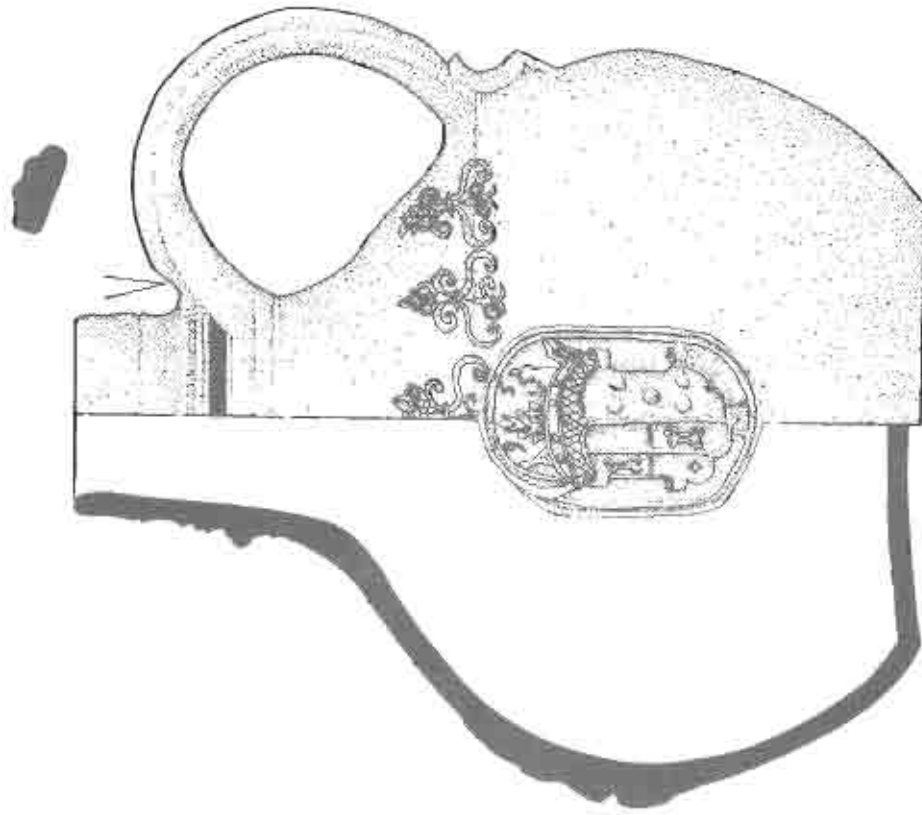


0 8
mm.

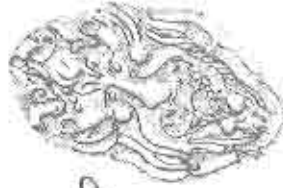
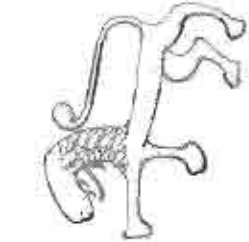
BAT 2358



BAT 2397



BAT 326



Type A masks



BAT 2214



BAT 2102

Type A Var. Masks



BAT 538 E



BAT 2113



BAT 2530

Type B Masks



BAT 2166



BAT 603 B



BAT 698



BAT 2059



BAT 2259

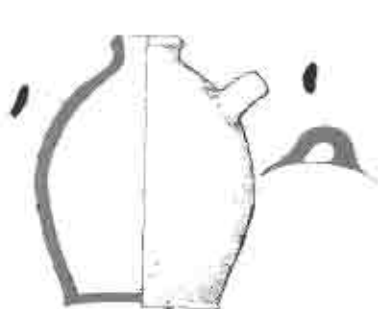


BAT 2283

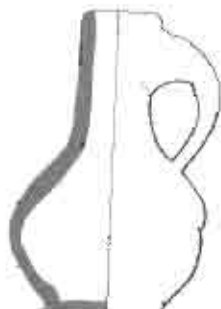


BAT 2450

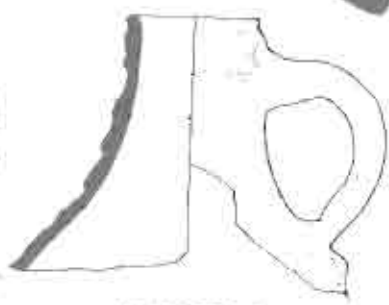
STONEWARE JUGS



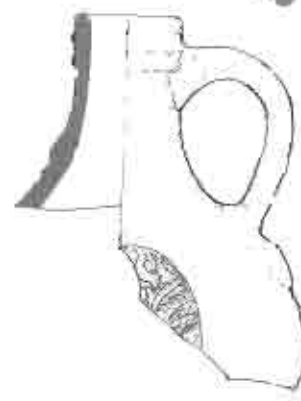
BAT 2406



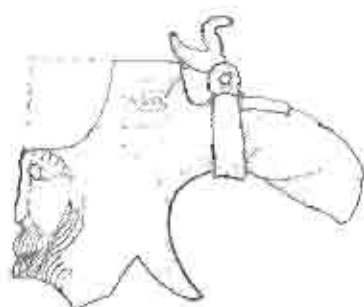
BAT 2667



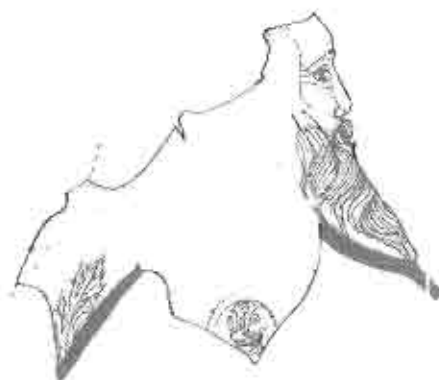
BAT 538 A



BAT 2373



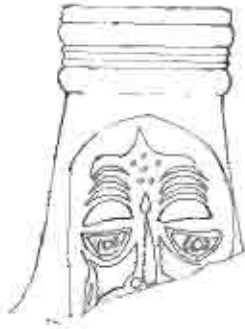
BAT 2234



BAT 2165

0 5
Cm

Type D Masks



BAT 2270



BAT 538A



BAT 2110



BAT 2106



BAT 2140



BAT 2181



BAT 538D

Type F Masks



BAT 354



BAT 538C



BAT 603A



BAT 2035



BAT 2037



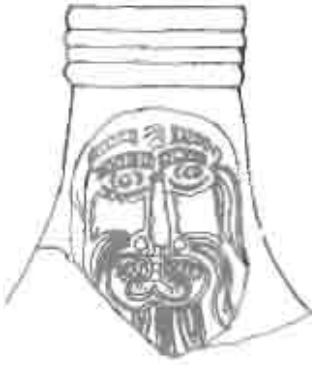
BAT 2112



BAT 2373

0 5
Cm

Type F. Var. Masks



BAT 538 B



BAT 2103



BAT 2141



BAT 2104



BAT 2167



BAT 2213



BAT 2481

Type G Masks



BAT 2055

Miscellaneous Masks



BAT 2003



BAT 2319



BAT 326

HERALDIC MEDALLIONS

Coat of Arms of Amsterdam.



BAT 2023



BAT 2121



BAT 2022

Coat of Arms of Gelderland.



BAT 2124 & 602



BAT 2283



BAT 539



BAT 21189

Coat of Arms of Cologne.

MISCELLANEOUS HERALDIC MEDALLIONS



BAT 2241



BAT 539 A



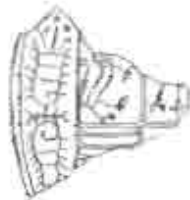
BAT 539B



BAT 602



BAT 2517



BAT 602



BAT 2517, 477



BAT 428



BAT 539



FLORAL MEDALLIONS



BAT 2014



BAT 2015



BAT 2218



BAT 2129



BAT 527



BAT 2117



BAT 2006



BAT 2024



BAT 602



BAT 2009



BAT 2245



BAT 539



BAT 539



BAT 2008

0 5
Cm

STYLISTIC HERALDIC MEDALLIONS



BAT 353



BAT 602



BAT 2007



BAT 2010



BAT 2553



BAT 539



BAT 539



BAT 602



BAT 2187



BAT 2463



BAT 2072



BAT 2361



BAT 2012



BAT 2073

0 ————— 5
Cm

MISCELLANEOUS MEDALLIONS



BAT 483



BAT 2534



BAT 2033 & 2219



BAT 602



BAT 539C



BAT 539, 2558



BAT 2036



BAT 2558



BAT 326



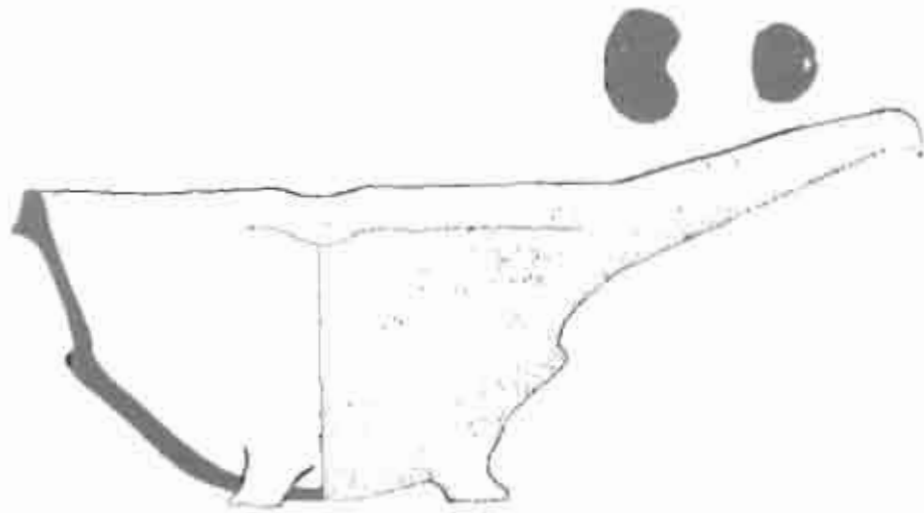
BAT 2029



BAT 2136



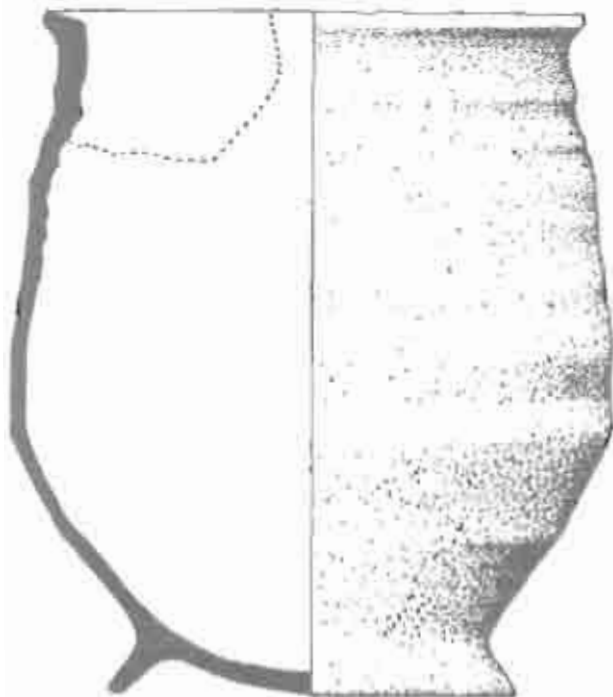
EARTHENWARE



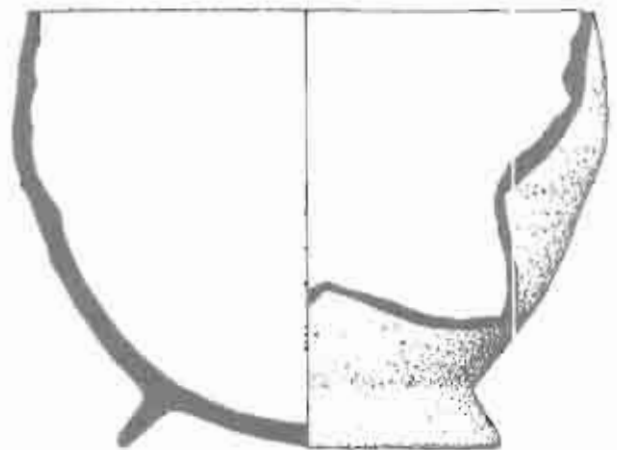
BAT 2333



BAT 2334



BAT 2315



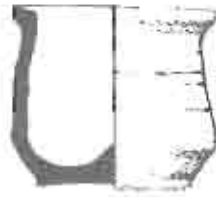
BAT 2339

0 5
Cm

EARTHENWARE



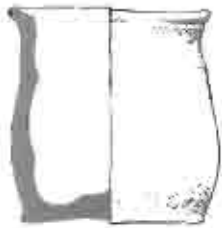
BAT 2252



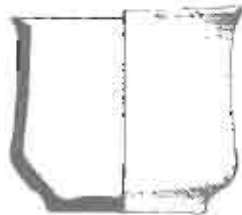
BAT 2296



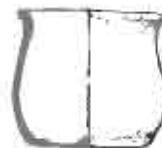
BAT 2297



BAT 2299



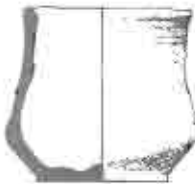
BAT 2301



BAT 2319



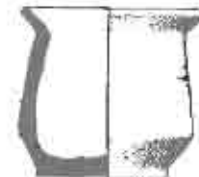
BAT 2320



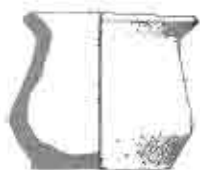
BAT 2321



BAT 2322



BAT 2323



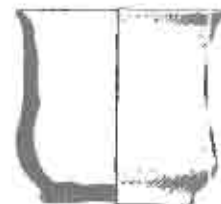
BAT 2324



BAT 2415



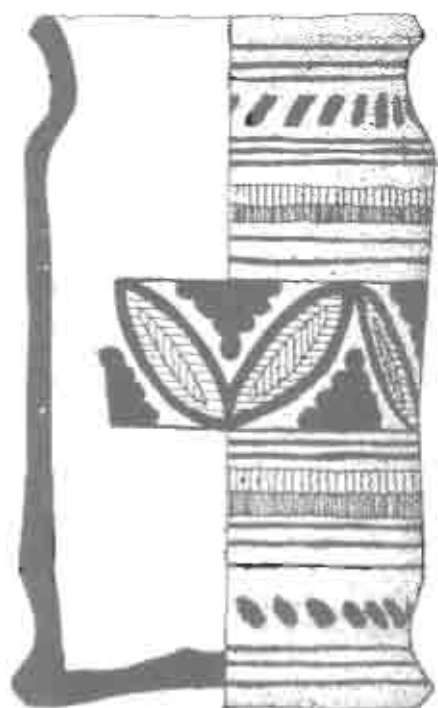
BAT 2422



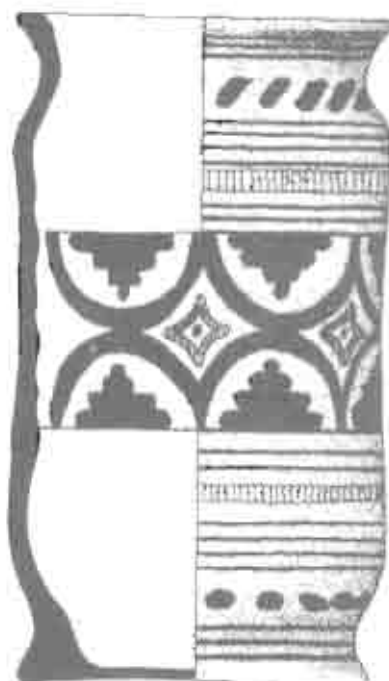
BAT 2424

0 5
Cm

MAJOLICA



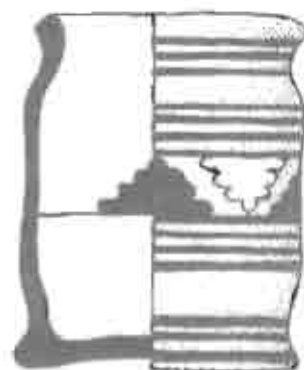
BAT 2326



BAT 2318



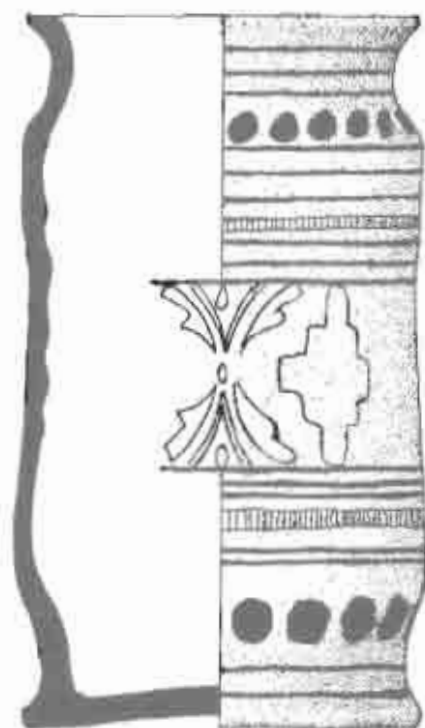
BAT 2337



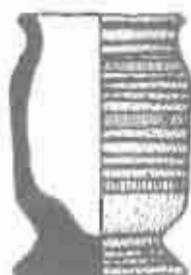
BAT 2668

0 5
Cm

MAJOLICA



BAT 2331



BAT 2669



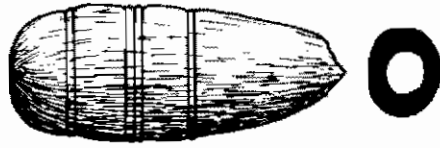
BAT 2670

0 — 5
Cm

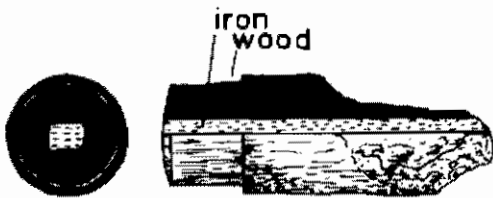
WOOD



BAT 4028



BAT 4243



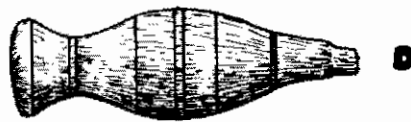
BAT 4085



BAT 4463



BAT 4084



BAT 4426



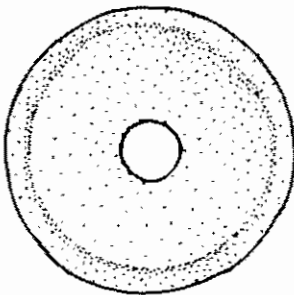
BAT 4069



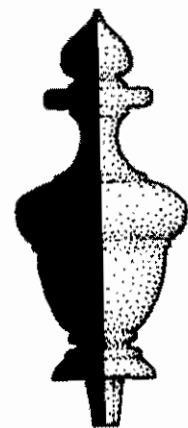
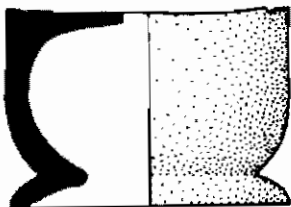
BAT 4472



BAT 4211

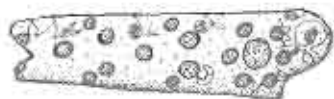


BAT 4401



BAT 4452

IVORY



BAT 4121

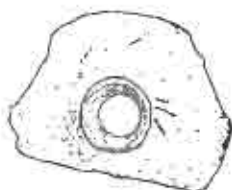
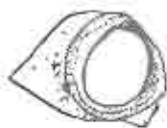
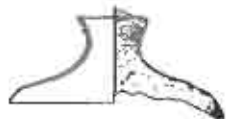


BAT 4159



BAT 4239

GLASS

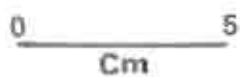


BAT 4092

BAT 4004



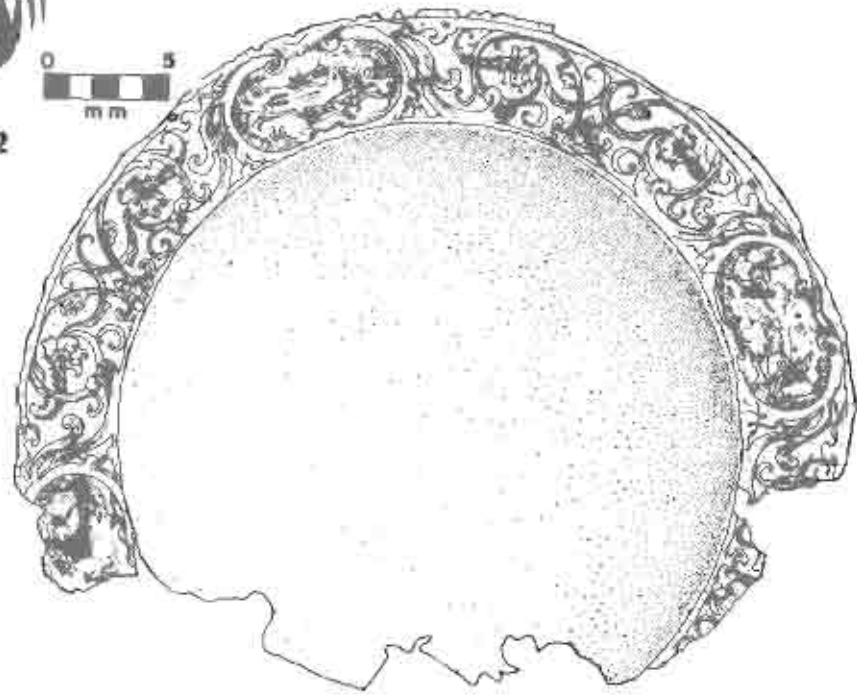
BAT 4078



SILVER

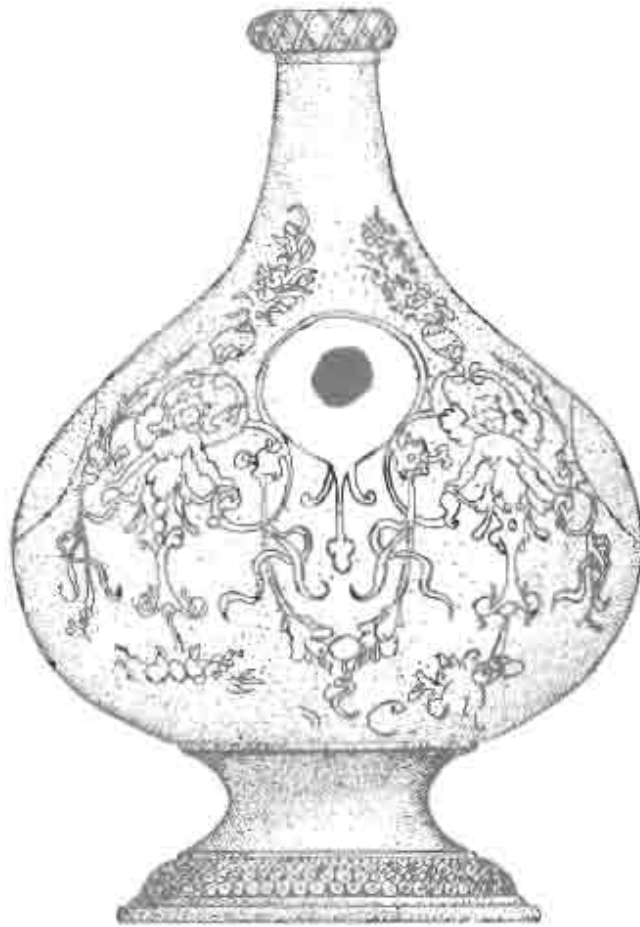


BAT 3432



BAT 3432

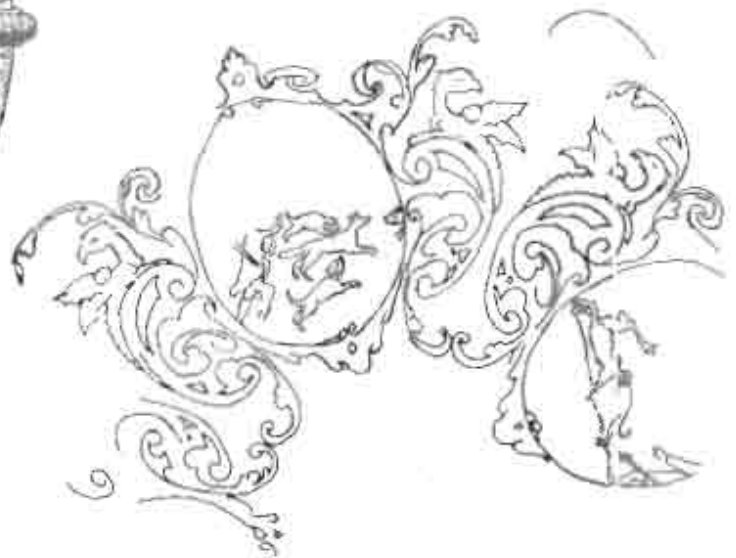
SILVER



BAT 3035



BAT 3009



0 5
Cm

SILVER



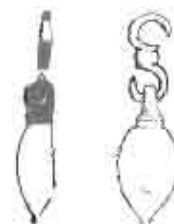
BAT 3059



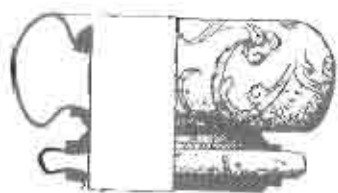
BAT 3565



BAT 3564



BAT 3594



BAT 3178



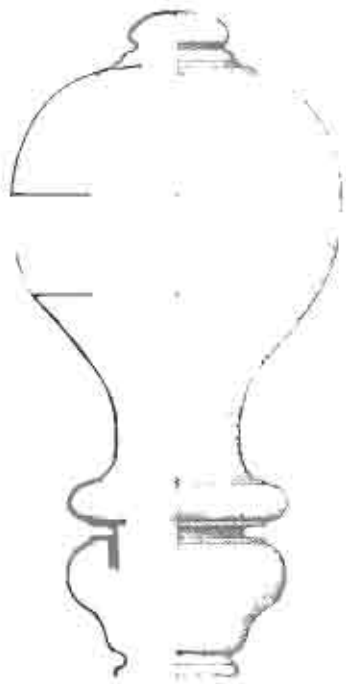
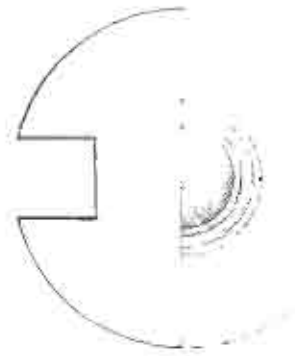
BAT 3562



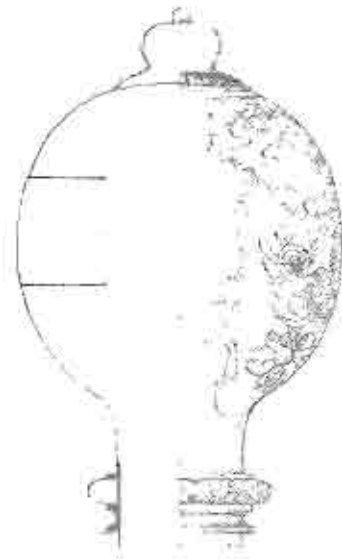
BAT 3069

0 ————— 5
Cm

SILVER

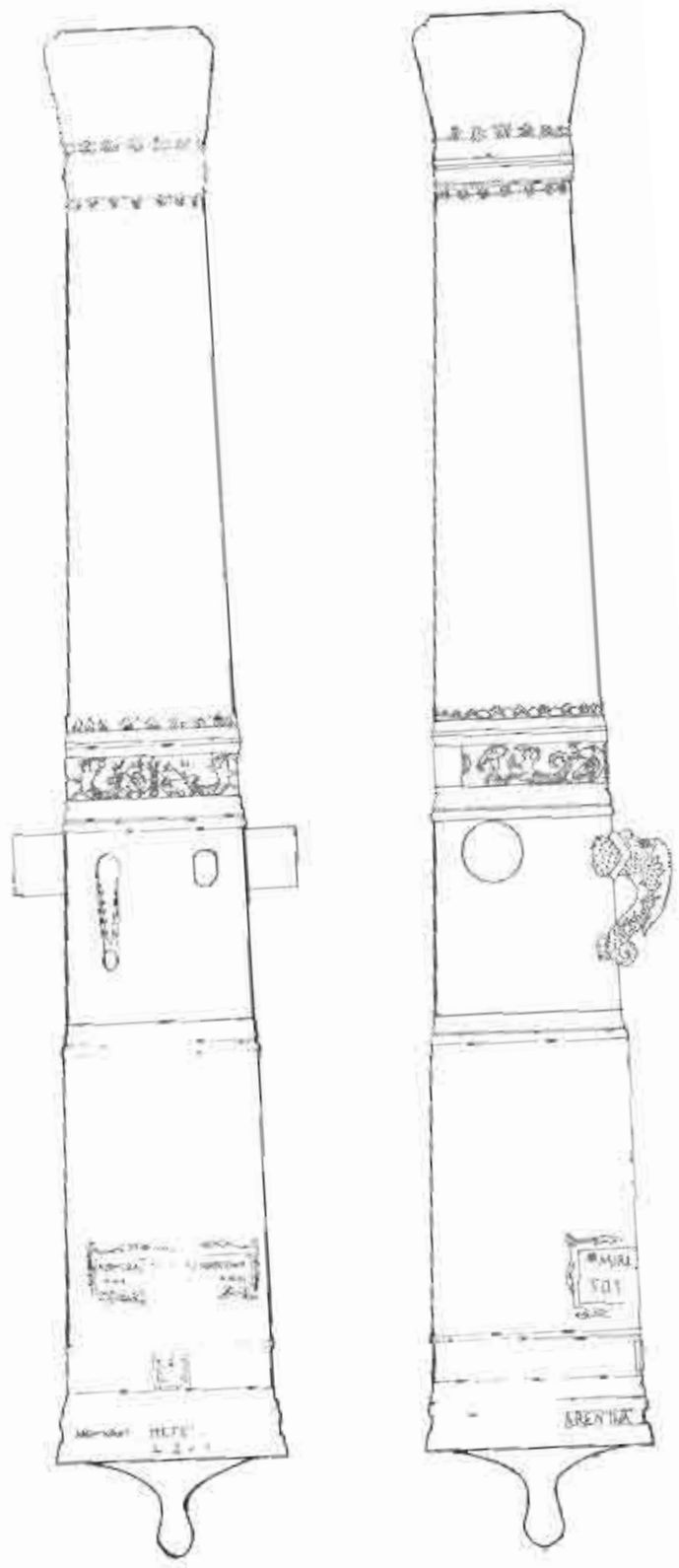


BAT 3030



BAT 3245

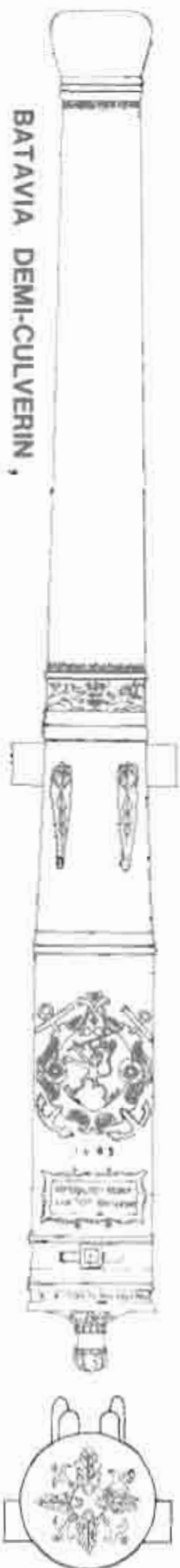
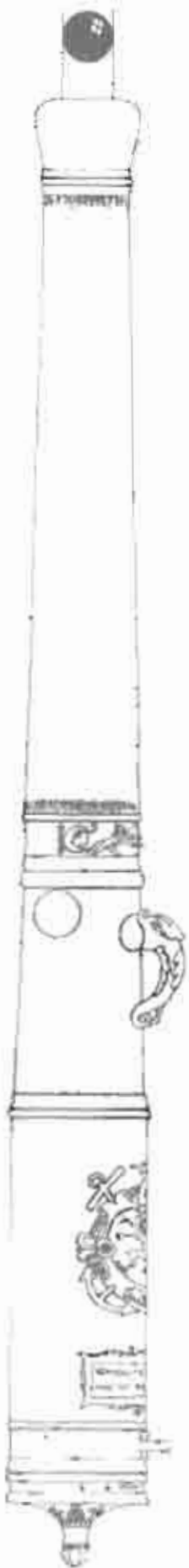
0 5
Cm



Bore: 151mm. 0 1 METRE

BATAVIA BRONZE CANNON, ROTTERDAM ADMIRALTY

BAT 3639



BATAVIA DEMI-CULVERIN,
ROTTERDAM ADMIRALTY

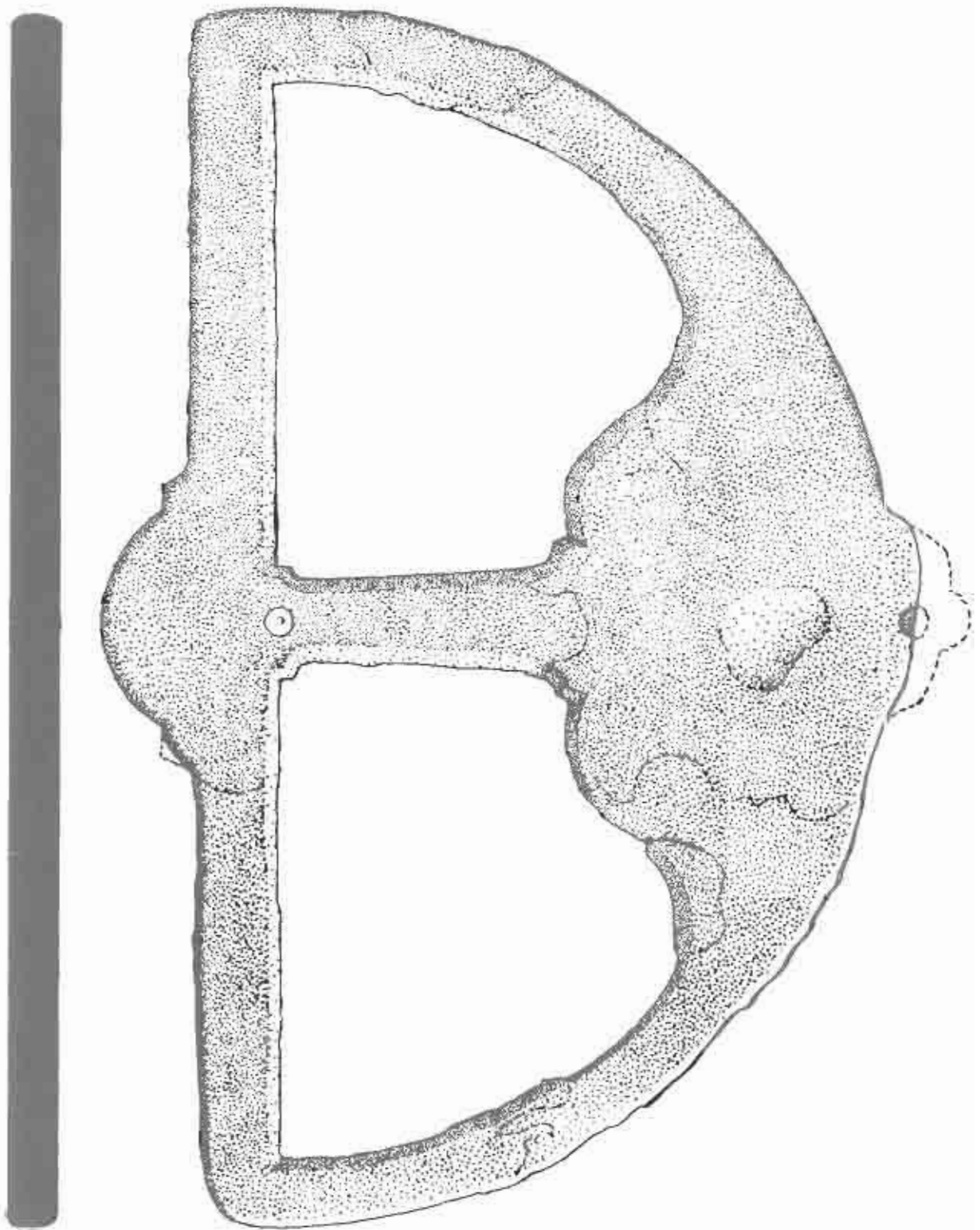
BAT 3637

Boort 120mm, 0



1 METRE

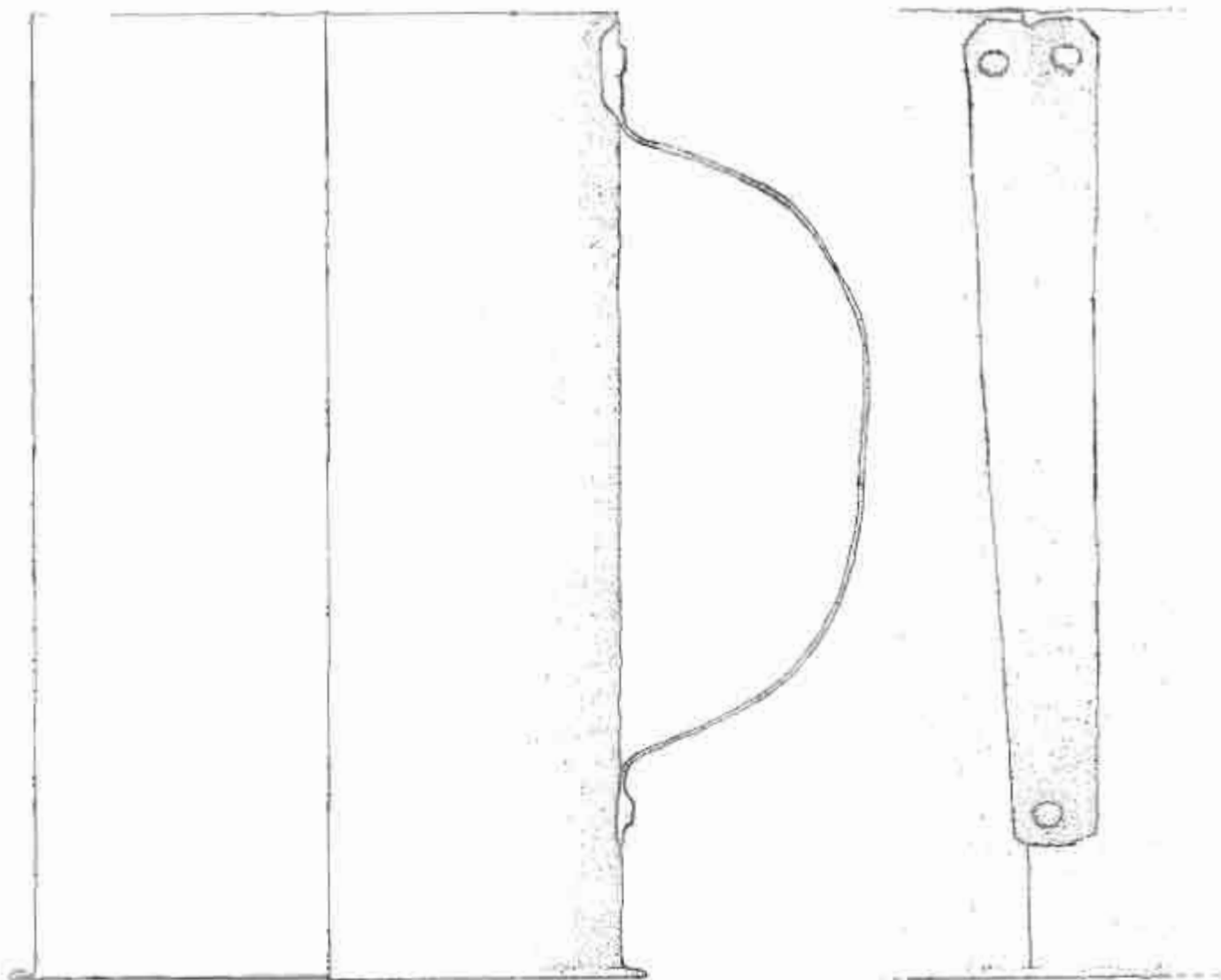
SEMI-CIRCULAR ASTROLABE



0 — 5
Cm

BAT 455

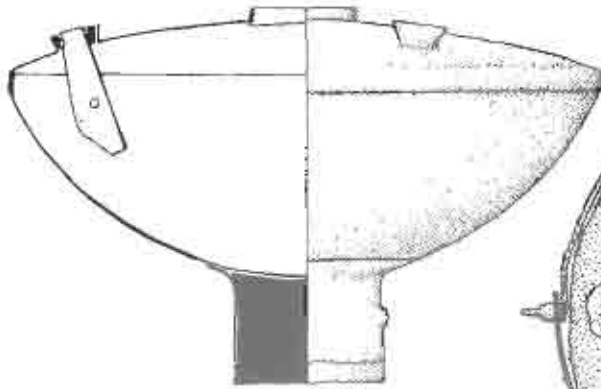
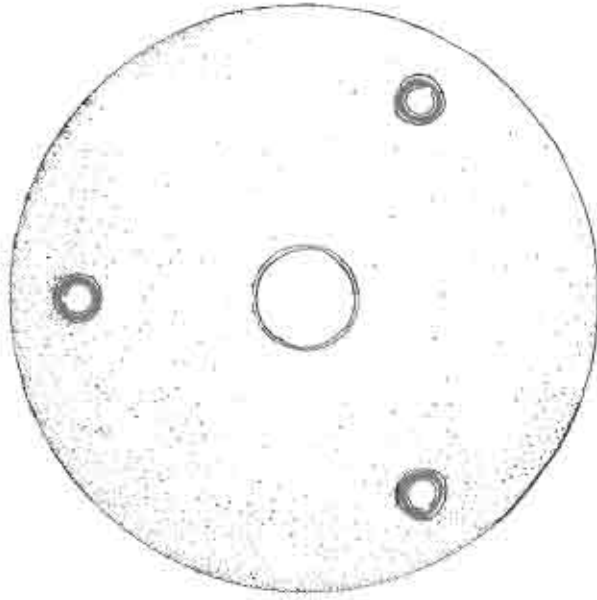
BRASS



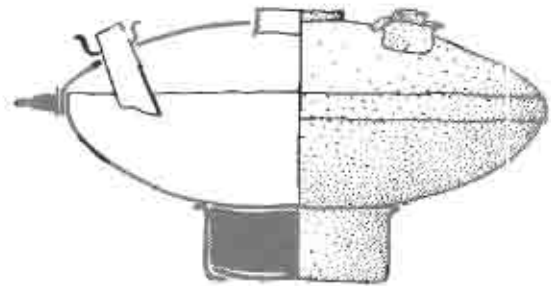
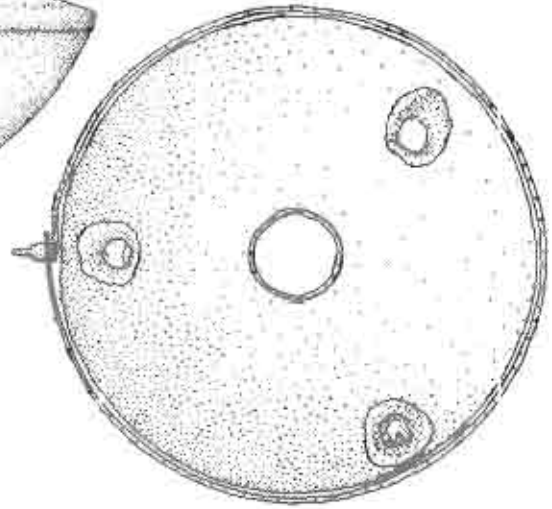
BAT 688



BRASS



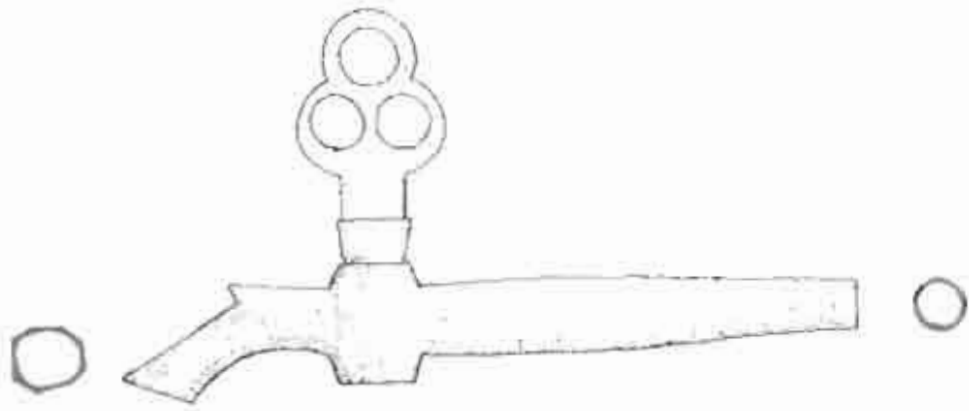
BAT 3079



BAT 3634

0 — 5
Cm

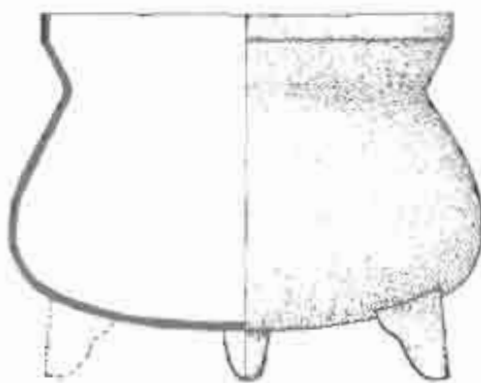
BRASS



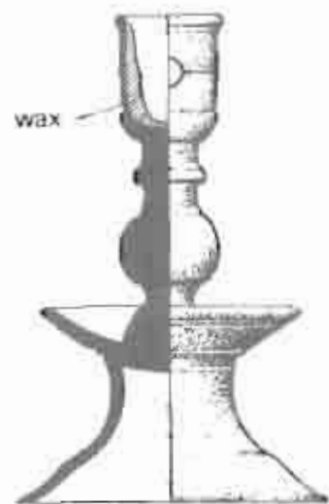
BAT 3260



BAT 3337



BAT 3136



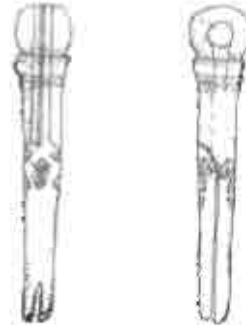
BAT 3397

0 5
Cm

BRASS



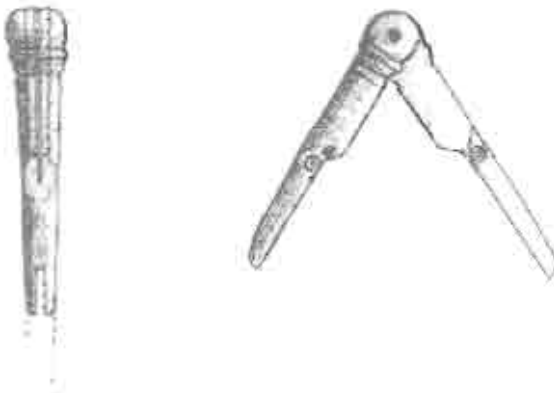
BAT 3053



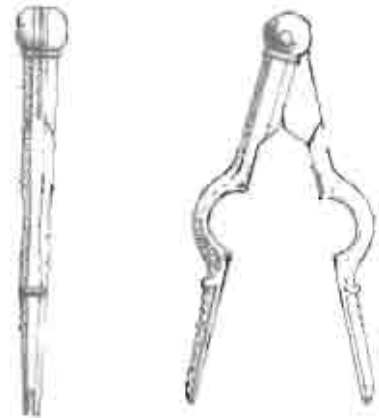
BAT 3320



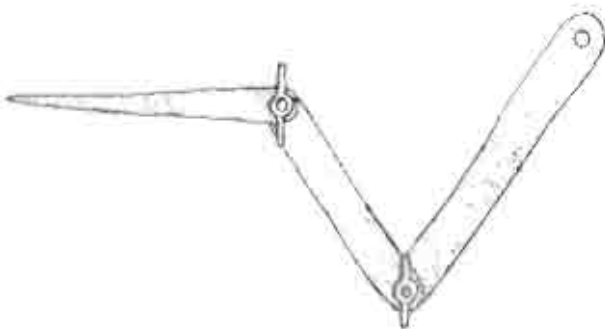
BAT 3406



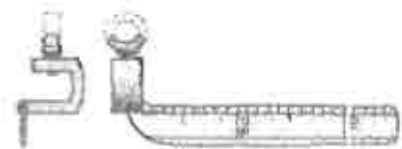
BAT 3171



BAT 3388

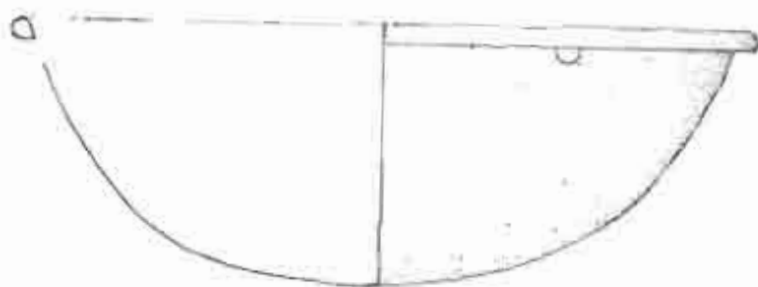
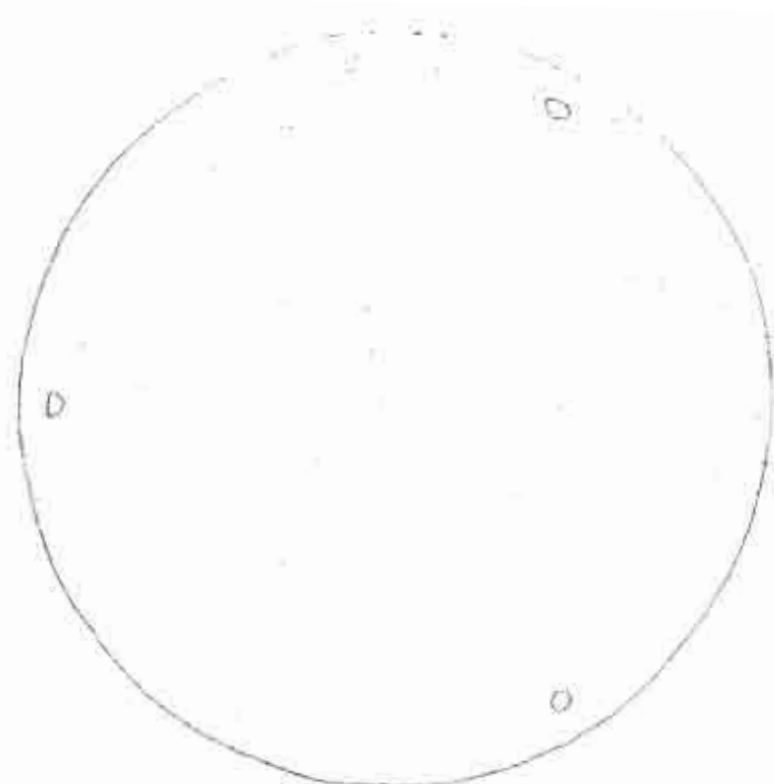


BAT 3083

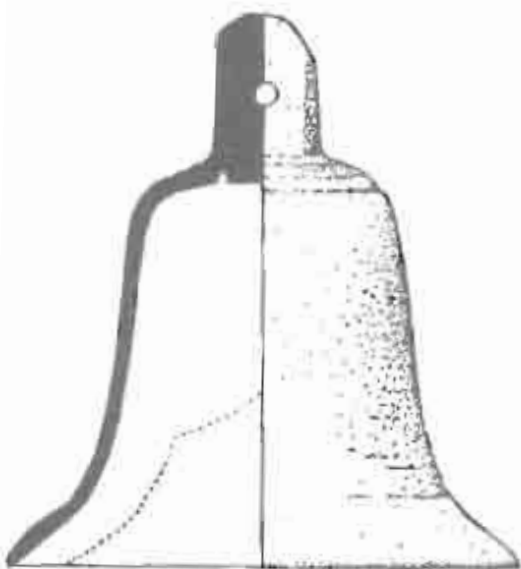


BAT 3071

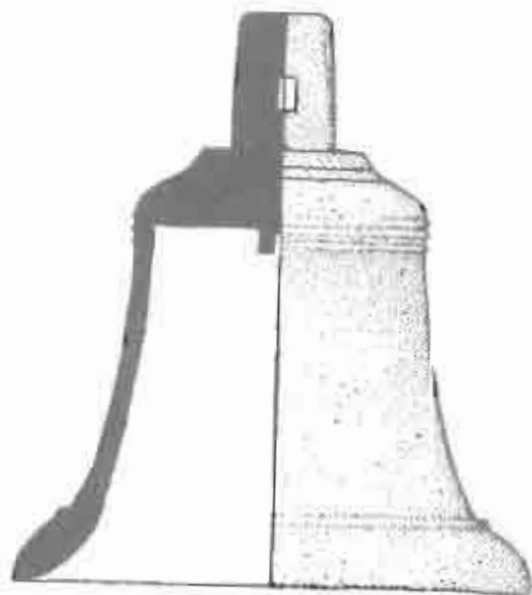
0 5
Cm



BAT 3604



BAT 3201



BAT 3404



BRASS



BAT 3133



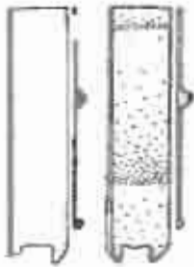
BAT 3247



BAT 3222



BAT 3584



BAT 3103



BAT 3131



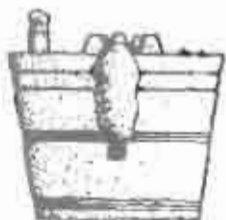
BAT 3295



BAT 3296



BAT 3219



BAT 3566



BAT 3579



BAT 3590

0 5
Cm

BRASS



BAT 3258



BAT 3297



BAT 3448



BAT 3575



BAT 3222



BAT 3252



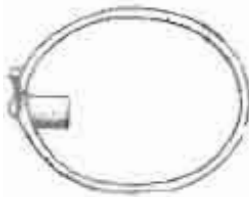
BAT 3598



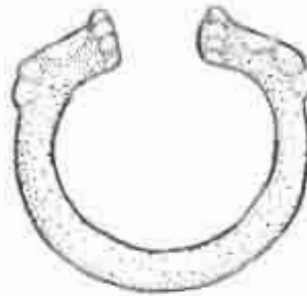
BAT 3132



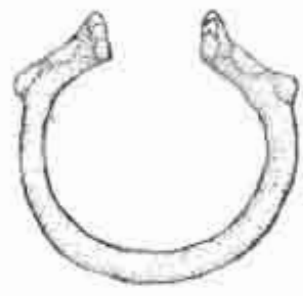
BAT 3183



BAT 3259



BAT 3399



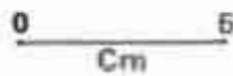
BAT 3583



BAT 3362



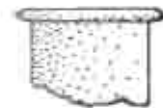
BAT 3104



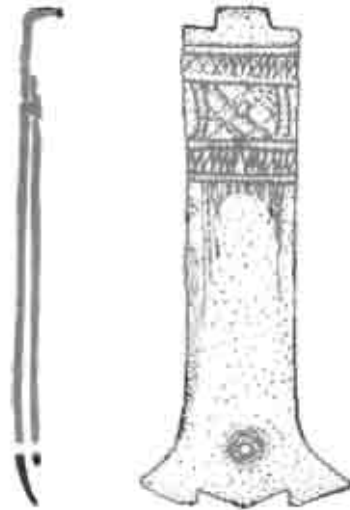
BRASS



BAT 342



BAT 3274



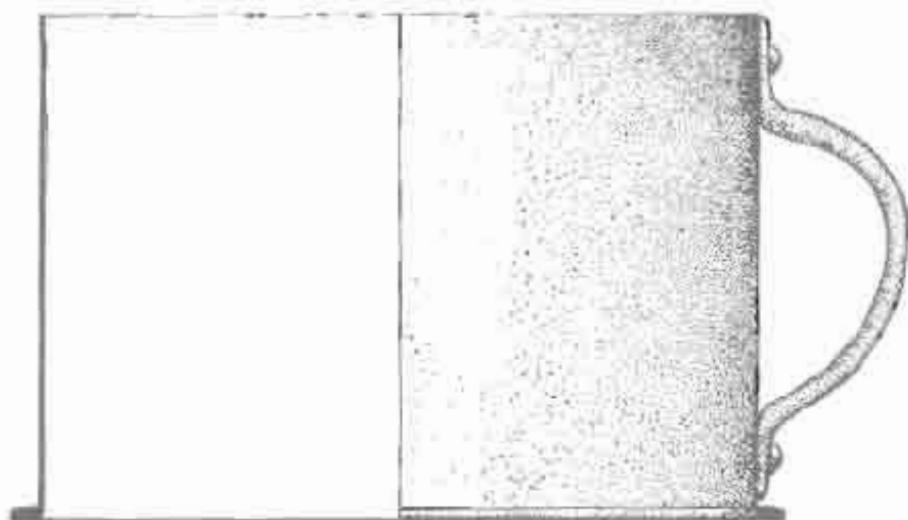
BAT 3631



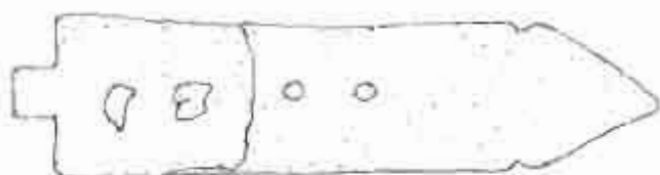
BAT 3580



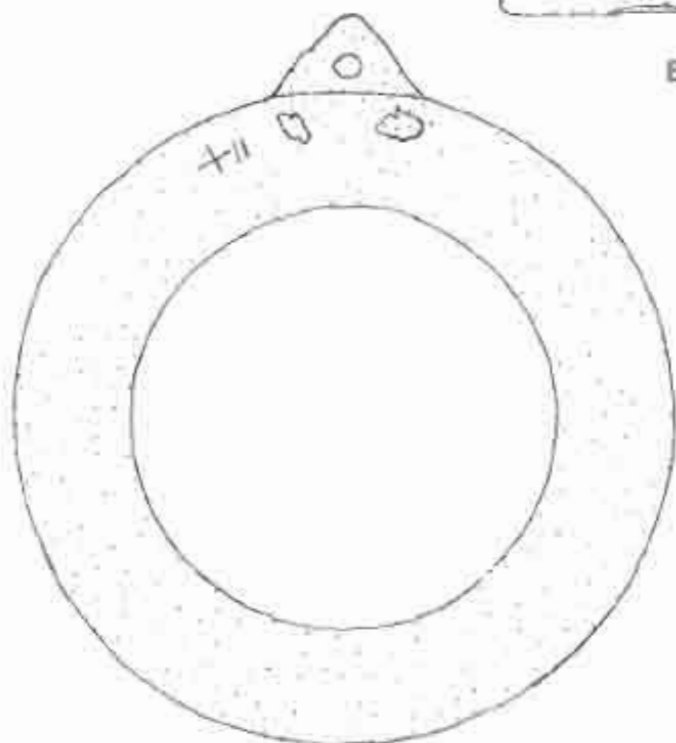
COPPER



BAT 3005



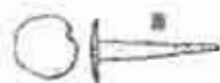
BAT 3134



BAT 3336

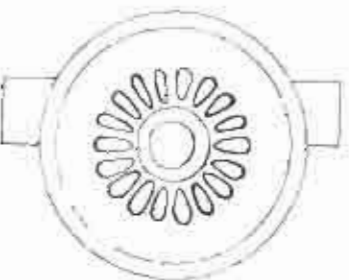
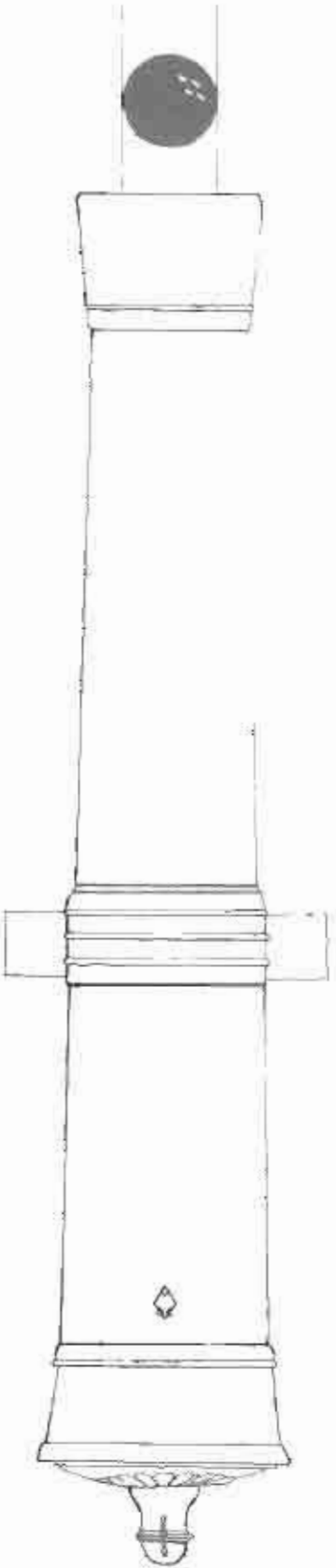
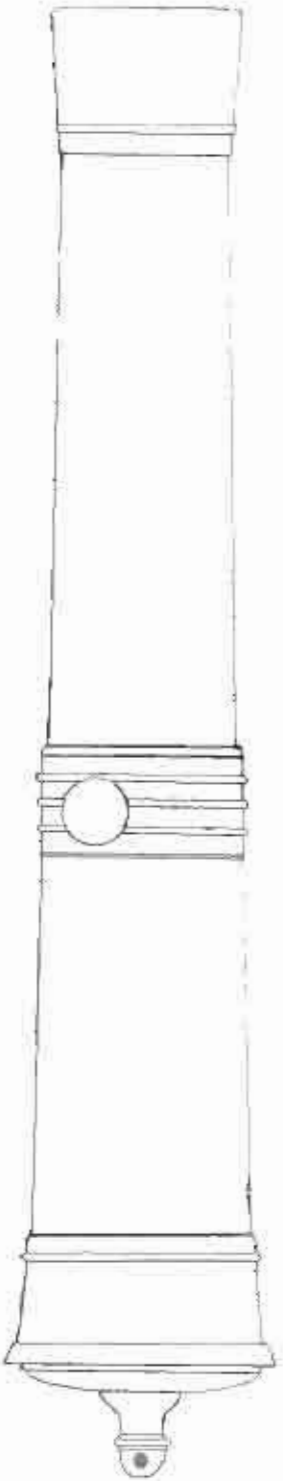


BAT 3484



BAT 3465



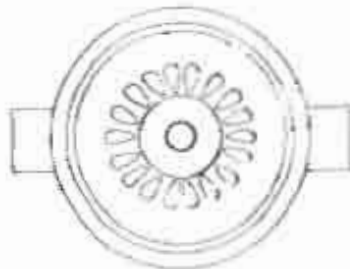
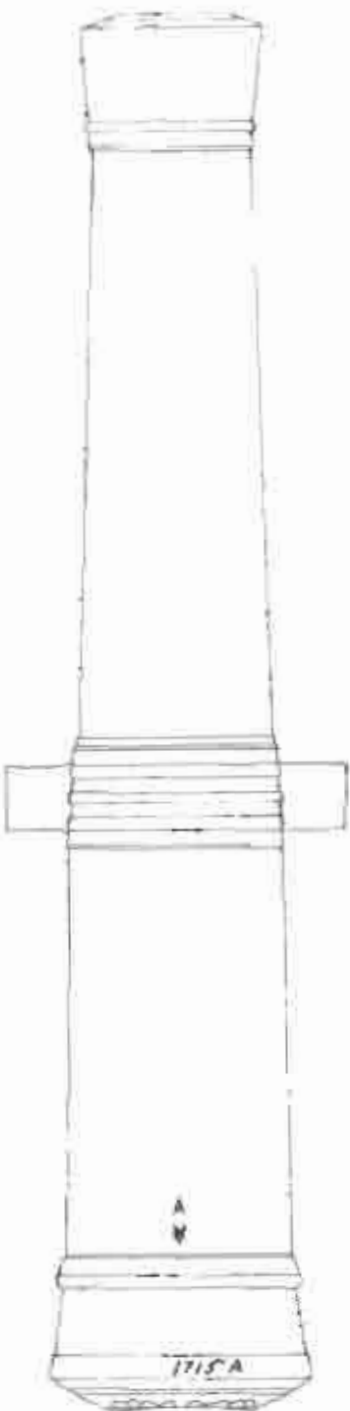


BATAVIA COPPER CANNON AMSTERDAM ADMIRALTY

BAT 3641

Bore:150mm.





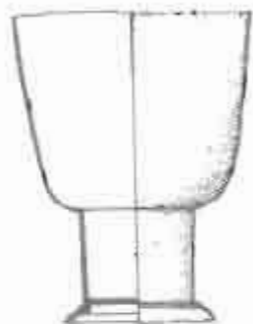
BATAVIA COPPER CANNON NO.7 AMSTERDAM ADMIRALTY

Bore:150mm.

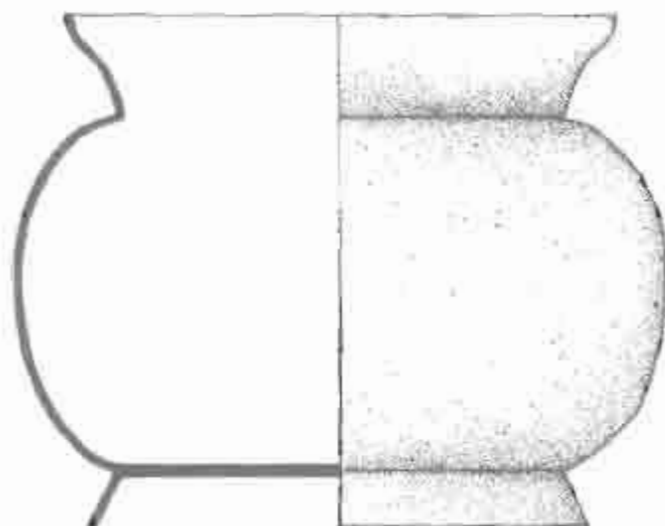
BAT 3642



PEWTER



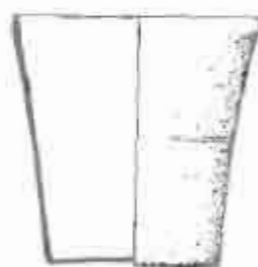
BAT 3376



BAT 3031



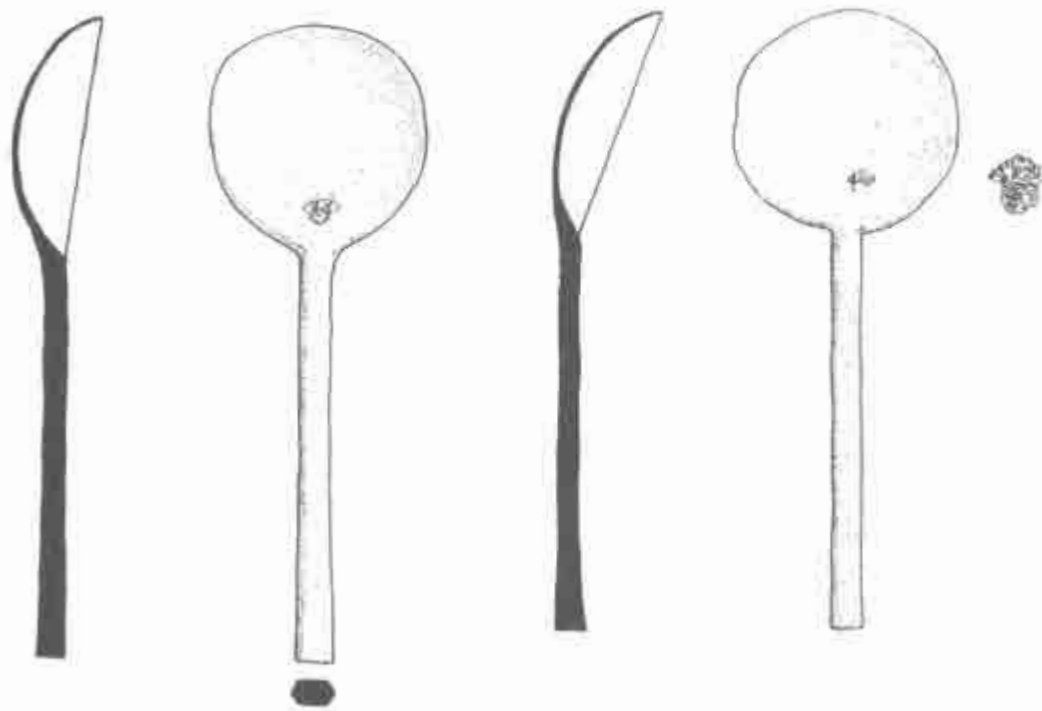
BAT 3004



BAT 3220

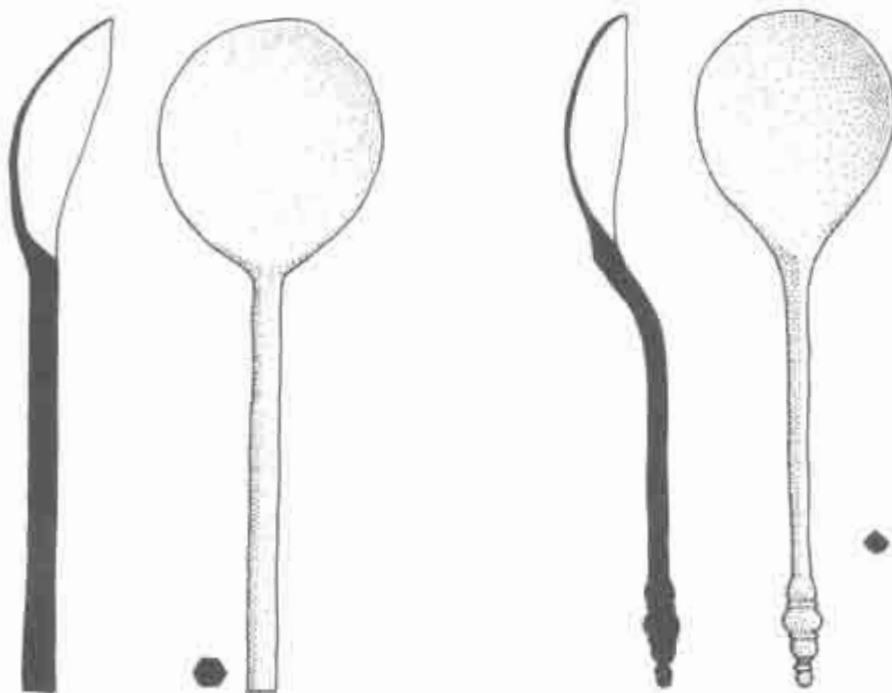
0 ————— 5
Cm

PEWTER



BAT 3073 }

BAT 3073A

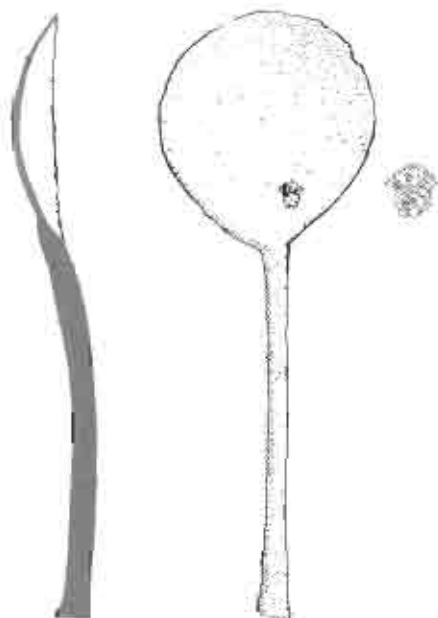


BAT 3080

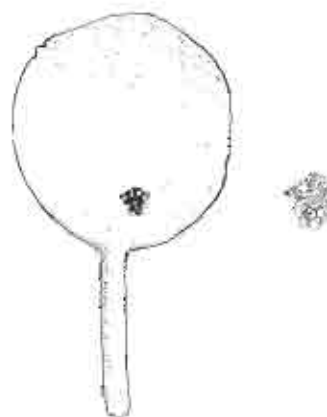
BAT 3081

0 ————— 5
Cm

PEWTER



BAT 3200



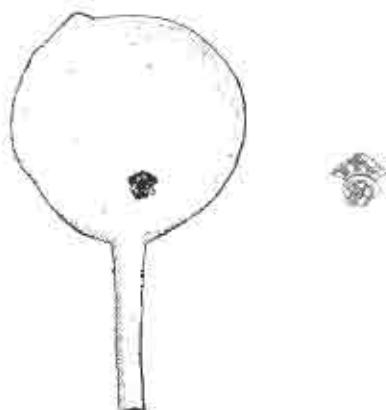
BAT 7094



BAT 3111



BAT 3111



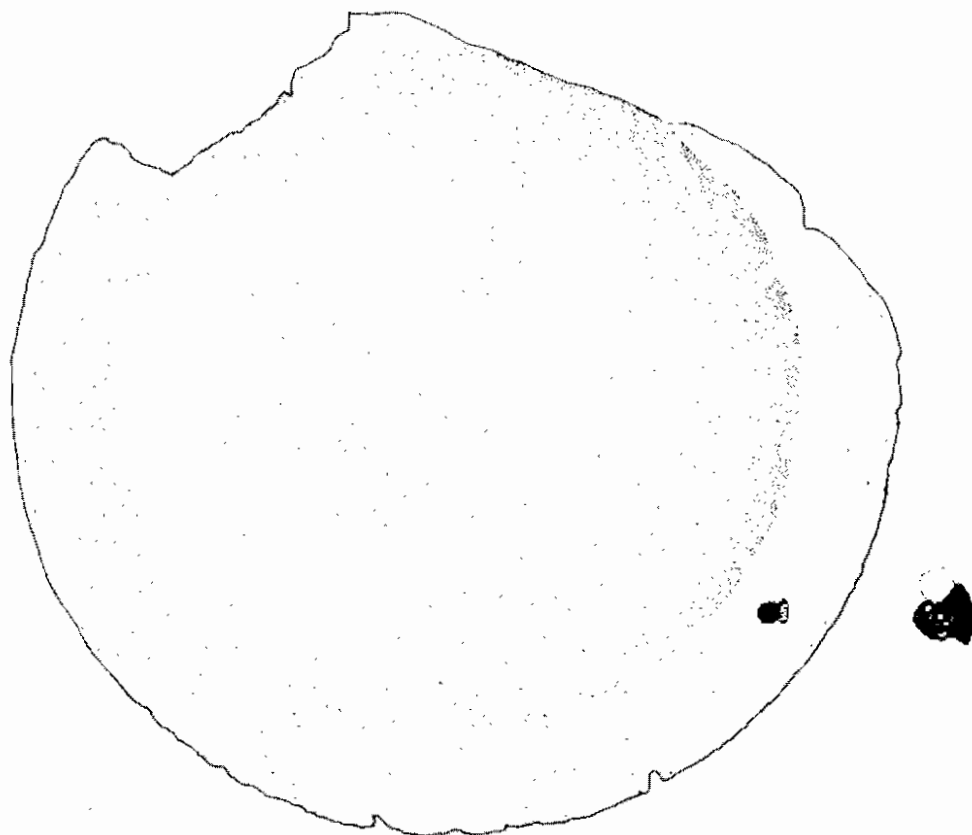
BAT 7092



BAT 7092



PEWTER



BAT 3279

PEWTER



BAT 3286

BAT 3285

BAT 3314

BAT 3319



BAT 3172

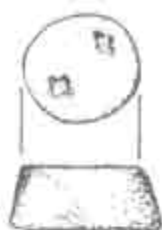
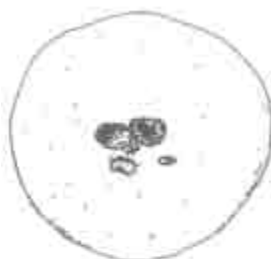
BAT 3255

BAT 3299

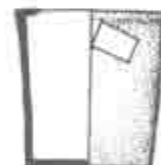
BAT 3344

BAT 3421

LEAD



BAT 3237



BAT 3272

BAT 3214

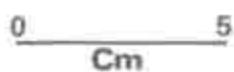
BAT 3318



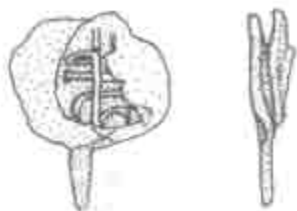
BAT 3308

BAT 3327

BAT 3373



LEAD



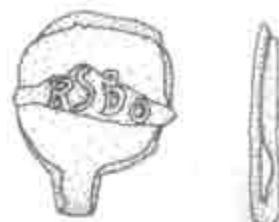
BAT 3037



BAT 3037A



BAT 3037B



BAT 3216



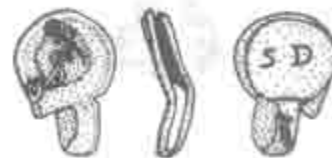
BAT 3313



BAT 3335



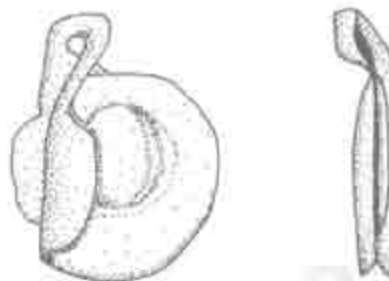
BAT 7096



BAT 7003



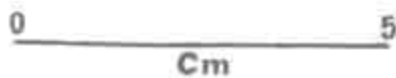
BAT 3034

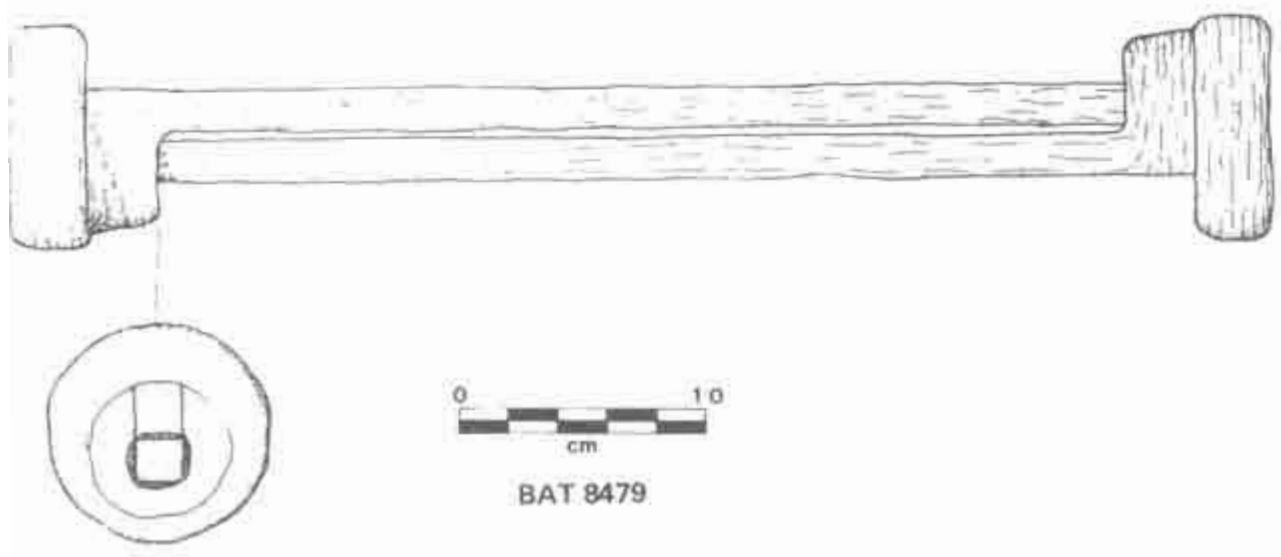
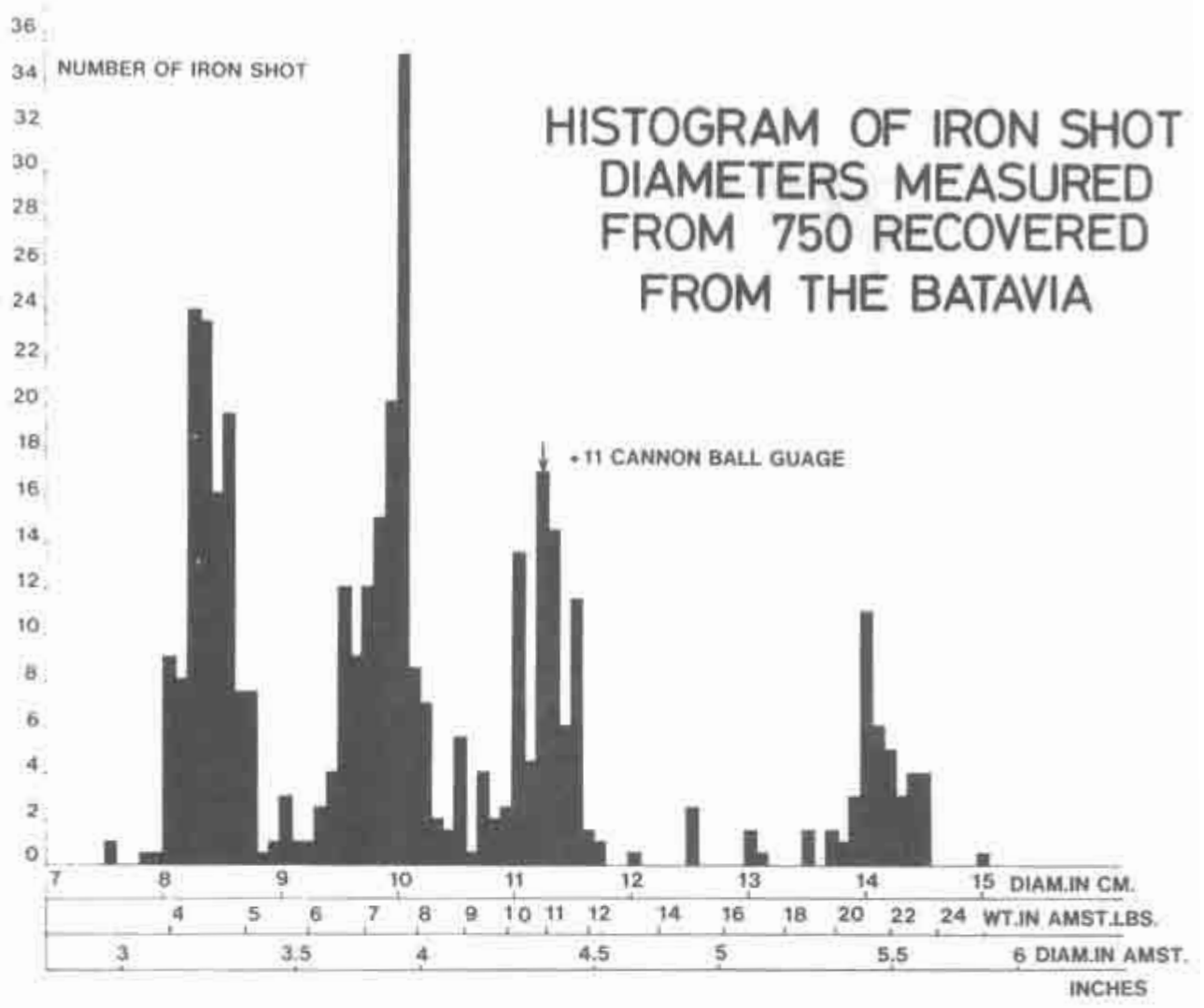


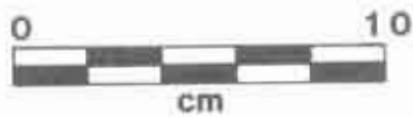
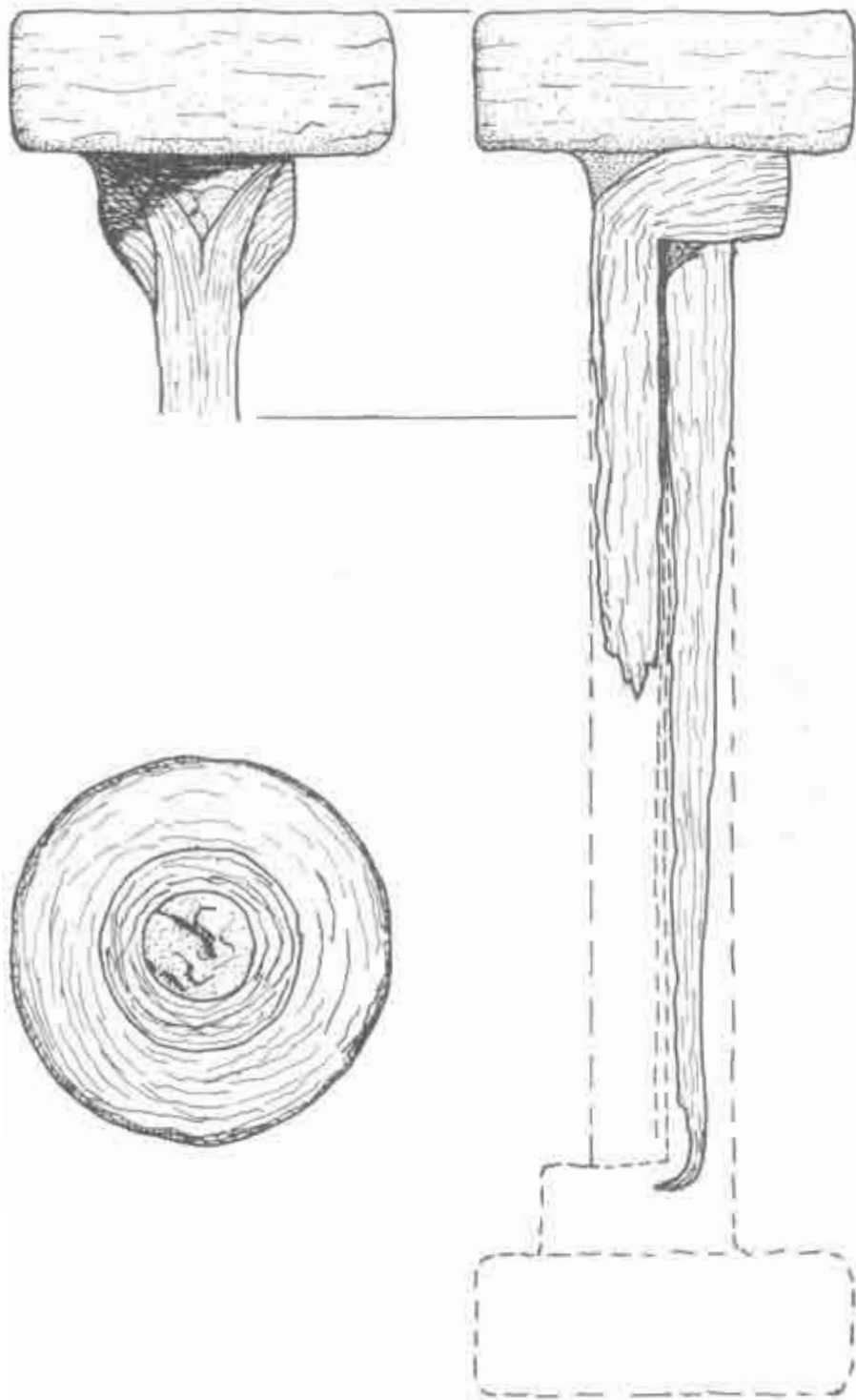
BAT 7056



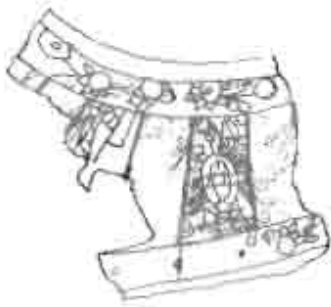
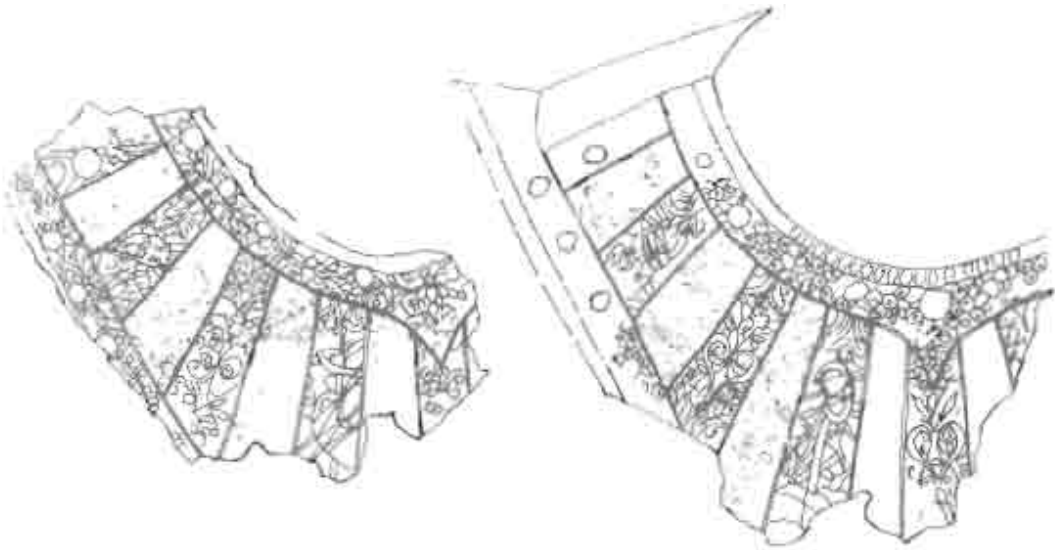
BAT 7055







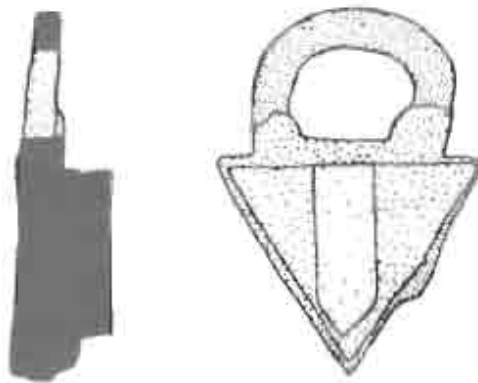
BAT 8480



BATAVIA ARMOUR CONCRETION

BAT 8734

0 5
Cm



BAT 4430

0 5
Cm